

The SIMS logo consists of the letters "SIMS" in a bold, white, sans-serif font, centered within a white square border. The background of the entire cover is a dark blue gradient with dynamic, sweeping light blue and white streaks that create a sense of motion and energy.

SIMS

**Producing the
School Census
Summer 2022
Return**

**English Special Schools
applicable to 7.204 onwards**

Handbook

Revision History

Version	Change Description	Date
7.204 - 1.0	Initial release.	03/03/2022

© Education Software Solutions Ltd 2022. All rights reserved.

No part of this publication may be reproduced, photocopied, stored on a retrieval system, translated or transmitted without the express written consent of the publisher. Microsoft® and Windows® are either registered trademarks or trademarks of Microsoft Corporation in the United States and/or other countries.

Doc Ref: SCSum_SP_7204/HBK/030322/AW

Providing Feedback on Documentation

We always welcome comments and feedback on the quality of our documentation including online help files and handbooks. If you have any comments, feedback or suggestions regarding the module help file, this handbook (PDF file) or any other aspect of our documentation, please email:

publications@educationsoftwaresolutions.co.uk

Please ensure that you include the module name, version and aspect of documentation on which you are commenting.

C | Contents

01 Introduction	1
Overview	1
How has the School Census Summer Return Changed?.....	2
Steps to Producing the School Census Return.....	4
Where to Find More Information.....	5
02 Preparing for the School Census Summer Return	7
Setting SIMS Permissions	7
What Version of SIMS is Required?.....	8
Preparing Data for the School Census Return	8
03 Completing the School Census Summer Return	11
Creating a New School Census Return	11
Configuring the Census Folder	13
Specifying the Security Message for Reports	14
Editing Census Details	14
Calculating All Details	15
Editing School Information	15
Information for Academies	17
Managing Early Years Data	17
Editing Early Years.....	17
Editing Pupil/Students with Top-Up Funding	22
Editing Pupil/Student Post Looked After Arrangements	24
Editing Funding and Monitoring	27
What Data should be entered?	28
Checking and Updating Funding and Monitoring	29
Managing School Dinners Taken on Census Day	31
Using Dinner Money to Calculate School Dinners Taken on Census Day	32
Using Attendance to Calculate School Dinners Taken on Census Day	33
Using Manual Entry to Record School Dinners Taken on Census Day	34
Entering Attendance Information	35
SIMS Attendance/Lesson Monitor Users	35
SIMS Attendance/Lesson Monitor Not in Use.....	37
04 Creating and Validating the Summer Return	39
Creating and Validating the School Census Return	39
Resolving Validation Errors and Checking Queries	40

Producing Detail Reports	42
Generating Detail Reports.....	48
Printing a Report from your Web Browser	49
Transferring Report Data to a Spreadsheet via Internet Explorer .	50
Deleting Temporary Web Browser Files	50
Producing the Summary Report	50
Generating the Summary Report.....	50
Editing an Unauthorised Return	51
Authorising the Return	52
Submitting the Return	54
Retrieving Authorised Census Return Files	54
Copying a Return	55
Deleting an Unauthorised Return.....	56
Index	59

01 | Introduction

Overview.....	1
How has the School Census Summer Return Changed?.....	2
Steps to Producing the School Census Return.....	4
Where to Find More Information.....	5

Overview

This handbook provides the information needed by Special schools in England to complete the School Census Summer 2022 Return, which takes place on Thursday 19 May.

The School Census Summer Return is required to be completed by maintained Nursery schools, Primary schools, Middle schools, Secondary schools, All-Through schools, Special schools, Pupil Referral Units (PRUs), City Technology Colleges (CTCs) and Academies (including free schools) in England. Non-maintained Special schools are also required to submit the return.

Currently, there are three School Census returns each year (i.e. Autumn, Spring and Summer), which collect detailed information about school characteristics and pupil/student details, e.g. pupil/student address, free school meals, exclusions, etc. Different data is collected depending on which return is being prepared, and your school phase.

A list of items collected from Special schools in England for the School Census Summer 2022 Return is available in a later section of this handbook (please see *Preparing Data for the School Census Return* on page 8).

NOTE: The content of the graphics (dates, names, panel numbers, etc.) are examples only of what you might expect to see when using SIMS to produce the School Census Return.

How has the School Census Summer Return Changed?

Changes to the School Census Summer Return include the following:

School Census Summer 2022 Return Key Dates

- Census date 19/05/2022
- Attendance collected from 01/01/2022 to 17/04/2022
- Exclusions collected from 01/08/2021 to 17/04/2022
- Free School Meal collected from 21/01/2022 to 19/05/2022
- Alternative Provision Placements collected from 21/01/2022 to 19/05/2022
- Learner Support collected from 01/08/2021 to 19/05/2022
- Funding and Monitoring collected from 01/08/2021 to 19/05/2022.

Census Return Browser Information

The **Census Return** browser now includes the following information:

- **Census Communications** message box - the message box includes links to the newsfeed, errors and resolutions document, handbooks, DfE guidance and Support Unit website (if available). Any additional information to help with the completion of the return is also displayed, if applicable.
- Fileset - if a post-release fileset is imported, the import date is displayed in the browser.
- Consolidated database patch - if a post-release consolidated patch is applied, the patch ID and run date are displayed in the browser.



More Information:

Creating a New School Census Return on page 11

Funding and Monitoring - New Panel

A read-only panel has been added to the **Census Return Details** page. The new **Funding and Monitoring** panel displays pupil/students with funding and monitoring information only.

The panel includes a **Recalculate** button, and an **Edit** button, which takes you to the **Update Funding and Monitoring** page (also available via the **Tools** menu).



More Information:

Editing Funding and Monitoring on page 27

Funding and Monitoring - Updating

Tools | Statutory Return Tools | Update Funding and Monitoring

An additional column is provided on the **Update Funding and Monitoring** page to enable the total number of hours for the whole academic year to be entered. The value entered in this column must be greater than or equal to the cumulative hours at the summer census. The values entered in the **Total Hrs for the Acad Yr** column are not reported in the census.

Where the number of hours fail validation, the cell displays a red background and an explanation is displayed in the footer.

To deselect school-led tutoring, all of the existing hours must be removed for the selected pupil/student(s). Clicking the **Undo** button reverts the changes, if required.



Additional Resources:

Preparing for the School Census Summer 2022 guide

Funding and Monitoring - Recording Hours

Tools | Statutory Return Tools | Update Funding and Monitoring

It is now possible to record up to 999.99 hours in the following columns:

- Cumulative Hrs at Aut Census
- Cumulative Hrs at Spr Census
- Cumulative Hrs at Sum Census
- Total Hrs for the Acad Yr.



More Information:

Editing Funding and Monitoring on page 27



Additional Resources:

Preparing for the School Census Summer 2022 guide

Funding and Monitoring - Person Data Output Report

Routines | Data Out | Person Data Output

The following Funding and Monitoring data items have been added to the Person Data Output (PDO) report:

Year, school led tutoring, cumulative hours at Autumn, Spring and Summer, total hours for the academic year and notes.

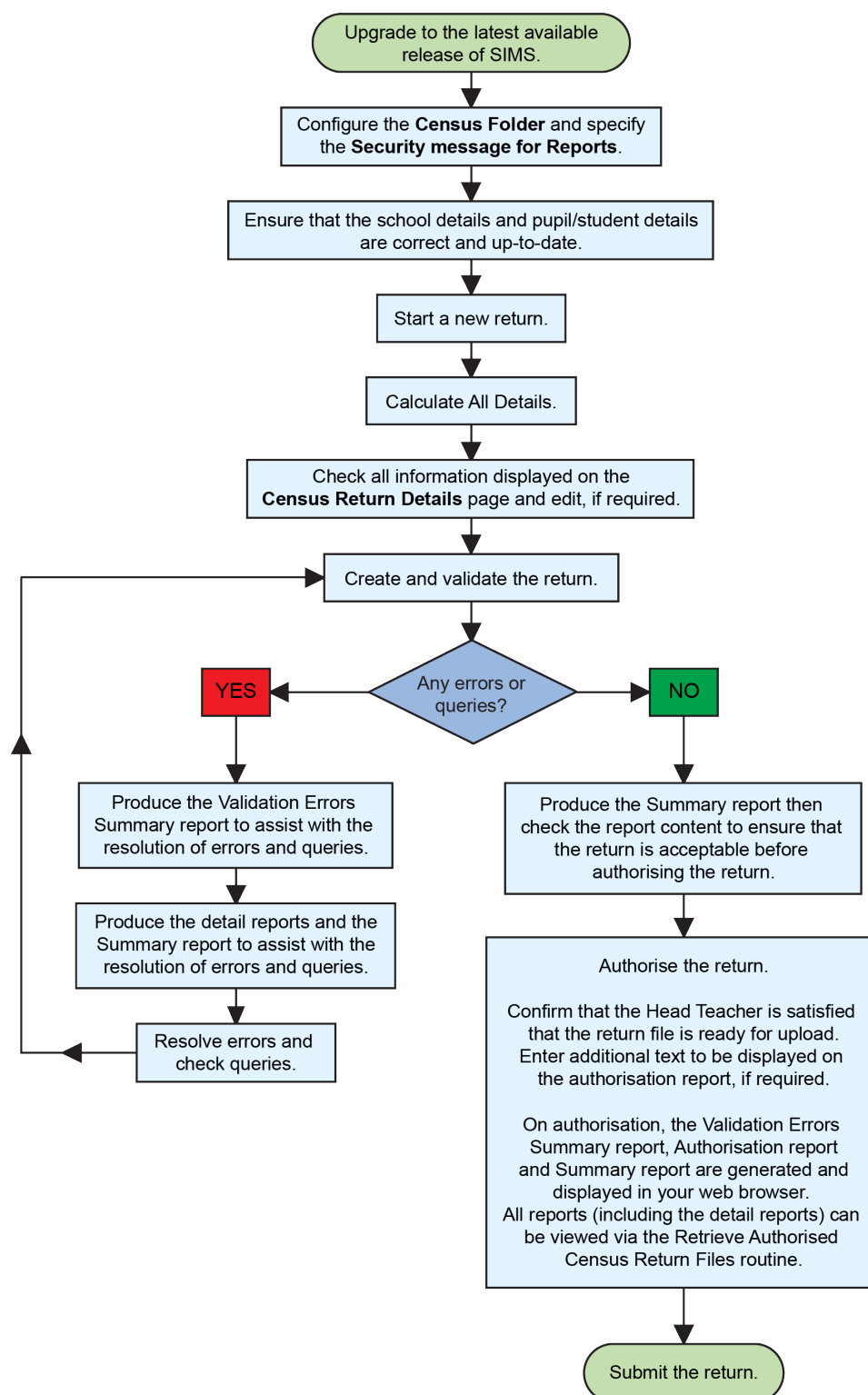


Additional Resources:

Setting Up and Administering SIMS handbook

Steps to Producing the School Census Return

The process of producing the School Census can be separated into several steps, some of which might need to be repeated to eliminate validation errors and queries.



Where to Find More Information

Online help can be accessed by pressing **F1** or clicking the applicable **Help** button in SIMS.

A wide range of documentation is available from the SIMS **Documentation Centre**, including handbooks, quick reference sheets and tutorials. Click the **Documentation** button located on the top right-hand side of the SIMS **Home Page**, select the required category, then select the document you require.

Additional Information

In addition to this handbook, a preparation guide that outlines how to prepare your data for the School Census, is also available from the SIMS **Documentation Centre**.

You are strongly advised to check the following SIMS Newsfeeds because they provide a range of explanatory text, presentations, videos and spreadsheets that you may find useful. These newsfeeds are updated regularly to provide the latest news and answers to enquiries. In particular, the newsfeeds for School Census provide the latest iteration of our spreadsheet for DfE validation rules and SIMS solutions.

The SIMS Newsfeed - Hub provides links to all the statutory returns related newsfeeds (https://customer.support-ess.com/csm?id=kb_article_view&sysparm_article=KB0035899).

- SIMS Newsfeed - School Census Summer 2022
- SIMS Newsfeed - DfE CBDS 2021/22
- SIMS Newsfeed - Course Management for SIMS 7 Summer Release 2022
- SIMS Newsfeed - Series 2100 Filesets for SIMS 7 Summer Release 2022.

02 | Preparing for the School Census Summer Return

Setting SIMS Permissions	7
What Version of SIMS is Required?	8
Preparing Data for the School Census Return	8

Setting SIMS Permissions

The following permissions are applicable to users who deal with returns.

Running the Return

To run the return, you must be a member of one of the following user groups in System Manager:

- Returns Manager
- Returns Operator.

Editing and Preparing Data

Users who edit and prepare data must have permissions to access additional areas of SIMS, e.g. pupil/student details, school details, etc. These users must be a member of the user groups applicable to the areas they are editing (please see Where to find More Information about Permissions on page 8).

Permissions Required to Import a Revised Fileset

The Import Fileset functionality enables updates to the Validation Errors Summary and the Summary report (derived from files supplied by the Statutory Body), and detail reports (provided by SIMS) to be imported into SIMS between SIMS releases.

To use the Import Fileset functionality (via **Tools | Setups | Import Fileset**), you must be a member of one of the following user groups in System Manager:

- Returns Manager
- System Manager.

For more information about the Import Fileset functionality, please refer to the applicable preparation guide. To access the SIMS **Documentation Centre**. Click the **Documentation** button located on the top right-hand side of the SIMS **Home Page**.

Where to find More Information about Permissions

Please contact your System Administrator/Manager if you are not sure whether you have the required permissions. For more information, please refer to the *Managing SIMS Users, Groups and Databases* handbook.

The SIMS Permissions Spreadsheet describing the numerous permissions available in SIMS is available on the support portal (https://customer.support-ess.com/csm?id=kb_article_view&sysparm_article=KB0036819).

What Version of SIMS is Required?

To run the return, you must have the SIMS 2022 Spring Release (7.204) or later installed.

To check which version of SIMS is installed, open SIMS and then select **Help | About SIMS**. A dialog similar to the one shown in the following graphic is displayed.

The version should read 7.204 or later.



Preparing Data for the School Census Return

Before beginning the process of producing the return, it is advisable to spend time ensuring that all school level and pupil/student level information is present and accurate in SIMS. For example, ensure that school details are correct, all new pupil/students have been added to SIMS, all leavers have been recorded and where applicable all exclusions have been recorded, etc.

The following information is collected from Special schools for the School Census Summer 2022 Return.

School Level

Characteristics:

- LA number
- DfE establishment number, school name and school phase
- school type, highest national curriculum year and lowest national curriculum year
- intake type
- governance
- school email address and telephone number.

Pupil/Student Level

- Pupil/Student Identifiers:
 - unique pupil number (UPN) and former UPN, unique learner number (ULN)
 - surname, forename, middle names, former surname, preferred surname
 - date of birth and gender.
- Characteristics:
 - first language
 - free school meal eligibility start date, end date and UK country in which the eligibility applies
 - school dinner taken
 - service children in education indicator
 - top-up funding indicator
 - post looked after arrangements
 - funded hours, extended childcare hours, 30 hour code, disability access fund indicator and hours at setting
 - learner funding and monitoring type, code and hours
 - Youth Support Services Agreement (YSSA) indicator and Learner Support code.
- Status:
 - enrolment status
 - date of entry
 - date of leaving
 - part-time indicator
 - boarder indicator
 - actual national curriculum year group.
- Special Educational Needs: SEN provision (status).
- Alternative Provision Placement (21/01/2022 to 19/05/2022):
 - unique reference number (URN)
 - UK provider register number (UKPRN)
 - setting type
 - placement reason
 - placement entry date
 - SEN provision at placement date of entry
 - placement leaving date
 - SEN provision at placement date of leaving
 - attendance pattern and sessions per week.
- Termly Exclusion Information (01/08/2021 to 17/04/2022):
 - exclusion category
 - reason for exclusion
 - SEN provision
 - exclusion start date
 - actual number of sessions from which the pupil/student was excluded.

02| *Preparing for the School Census Summer Return*

- Home Information: Pupil/student's full home address, including post code and unique property reference number (UPRN).
- Termly Attendance Information (01/01/2022 to 17/04/2022):
 - If SIMS Attendance is in use: all attendance categories are collected in the census.
 - If SIMS Attendance is not in use: possible sessions, sessions missed due to authorised absence, sessions missed due to unauthorised absence, attendance codes and number of sessions missed, sessions attending approved educational activity, sessions unable to attend due to exceptional circumstances, sessions unable to attend due to Coronavirus.

For more information and instructions on all of the preparations that need to be carried out before the census return is produced, please refer to the appropriate *Preparing for the School Census Summer 2022* guide.

The preparation guide, together with other useful School Census documentation, is available from the SIMS **Documentation Centre** (accessed via the **Documentation** button, which is located on the top right-hand side of the SIMS **Home Page**).

03| Completing the School Census Summer Return

Creating a New School Census Return	11
Configuring the Census Folder	13
Specifying the Security Message for Reports	14
Editing Census Details.....	14
Editing School Information	15
Managing Early Years Data	17
Editing Pupil/Students with Top-Up Funding	22
Editing Pupil/Student Post Looked After Arrangements	24
Editing Funding and Monitoring	27
Managing School Dinners Taken on Census Day.....	31
Entering Attendance Information	35

Creating a New School Census Return

Before creating a new return, ensure that all pupil/student and school information is present and accurate in SIMS.

IMPORTANT NOTE: After upgrading to the SIMS 2022 Spring Release, select **Tools | Statutory Return Tools | Update Funding and Monitoring** to edit Funding and Monitoring hours data.

Ensure that no red cells are displayed because this would prevent the census from being created.

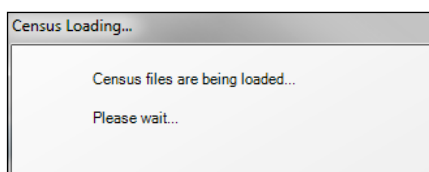
The School Census Summer 2022 Return collects data for:

- all pupil/students on the register on census day (19/05/2022).
- any additional pupil/students not on-roll on census day who:
 - had least one attendance session during the collection period from 01/01/2022 and 17/04/2022.
 - had exclusion that started between 01/08/2021 and 17/04/2022.
 - had funding and monitoring information between 01/08/2021 and 19/05/2022.
 - had an alternative provision placement between 21/01/2022 and 19/05/2022.
 - had Learner Support funding from 01/08/2021 to 19/05/2022.

It is possible to create more than one return, enabling you to carry out dry runs so that you can check what data needs to be added or updated. Any unwanted returns can be deleted (providing they have not been authorised).

03| Completing the School Census Summer Return

1. Select **Routines | Statutory Returns | School Census** to load the School Census validation and reporting files.



NOTE: The first time that **Routines | Statutory Returns | School Census** is selected during each SIMS session, there is a delay while the School Census files are loaded.

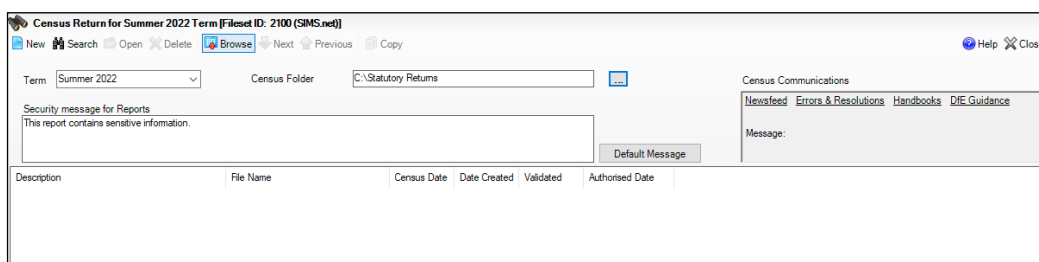
When the files are loaded, the **Census Return** browser is displayed.

The **Census Communications** message box includes links to the newsfeed, errors and resolutions document, handbooks, DfE guidance and Support Unit website (if available). Any additional information to help with the completion of the return is also displayed, if applicable.

NOTES:

The **Fileset ID** is displayed in the browser header (for information only). The following graphic shows the position for the first release in the 2100 fileset series, where the fileset is obtained from the SIMS .net folder. As soon as any further release in the series is imported, the reference to the SIMS .net folder is no longer displayed. This is because the data fileset is then obtained from the document server. Instead, the import date is displayed adjacent to the **Fileset ID**.

If a post-release consolidated database patch is applied, the patch ID and run date are also displayed in the browser.



By default, **Summer 2022** is displayed in the **Term** field.

TIP: To view a previous term (in the current academic year), select from the **Term** drop-down list, then click the **Search** button.

2. Ensure that the correct **Census Folder** is selected and that the required **Security message for Reports** is specified as described in the following sections.



More Information:

Specifying the Security Message for Reports on page 14
Deleting an Unauthorised Return on page 56

Configuring the Census Folder

Before creating a return, the folder in which the return file will be saved must be specified.

IMPORTANT NOTES: Due to the sensitive nature of some of the data stored in SIMS, careful consideration must be given when specifying the location of any folder into which you save sensitive data, e.g. census returns, imported and exported CTFs, etc.

You should be mindful of your school's responsibilities with respect to information security. Consider which users have access to the chosen folder, especially if the folder is shared on a server. Please refer to the government website for more information about securing your information (<https://www.gov.uk/service-manual/technology/securing-your-information>). If you are in any doubt, you should consult with your IT Security Officer before proceeding.

The General Data Protection Regulation (GDPR), which replaces the Data Protection Act 1998, is a directive for certain safeguards regarding the use of personal data. It is important that schools process all data (not just the data collected for the school census) in accordance with the full requirements of the GDPR.

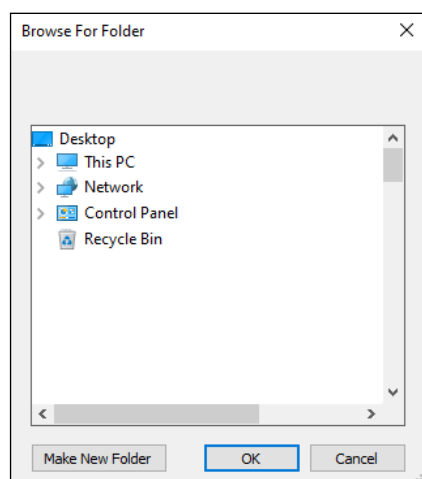
Further information on the GDPR can be found on the Guide to the General Data protection Regulations (GDPR) page of the Information Commissioners Office (ICO) website (<https://ico.org.uk/for-organisations/guide-to-the-general-data-protection-regulation-gdpr>).

1. In the **Census Folder** field, enter the location of the folder where the return files are to be stored.

Alternatively, click the **Browse** button to display the **Browse For Folder** dialog.



Browse button



03| Completing the School Census Summer Return

2. Navigate to the location of the required folder and highlight it. If a suitable folder does not exist, click the **Make New Folder** button, then enter a suitable name for the new folder.

IMPORTANT NOTE: If you are changing the location of the folder, ensure that authorised personnel only have access to the new folder, as the folder will contain sensitive data. For more information, please see the important note at the beginning of this section.

3. Click the **OK** button.
A message dialog requests confirmation that you want to continue.
4. Click the **OK** button to select or create the folder and return to the browser, where the new folder name is displayed.
5. Ensure that the **Security Message for Reports** is appropriate for your school.

Specifying the Security Message for Reports

The **Security message for Reports** field displays the text that will be included in the header of each report.

The default text (**This report contains sensitive information**) can be edited, if required. Clicking the **Default Message** button reverts the amended text to the original default text.

When the security message and census folder are specified, a new return can be created. Click the **New** button to display the **Census Return Details** page.

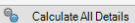




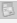





Editing Census Details

The **Census Details** panel displays the following read-only information:

- Census Date: 19/05/2022
- Attendance data collected from 01/01/2022 to 17/04/2022
- Exclusions data collected from 01/08/2021 to 17/04/2022

NOTE: Permanent exclusions are collected only if a final review exists.

- FSM (Free School Meal) data collected from 21/01/2022 to 19/05/2022
- Alternative Provision Placements collected from 21/01/2022 to 19/05/2022
- Learner Support data collected from 01/08/2021 to 19/05/2022.

1 Census Details					
Census Date	19/05/2022 				
Description	School Census Summer 2022				
Attendance collected from	01/01/2022 	Attendance collected to	17/04/2022 		
Exclusions collected from	01/08/2021 	Exclusions collected to	17/04/2022 		
FSM collected from	21/01/2022 	FSM collected to	19/05/2022 		
AP Placements collected from	21/01/2022 	AP Placements collected to	19/05/2022 		
Learner Support collected from	01/08/2021 	Learner Support collected to	19/05/2022 		

By default, the return **Description** is displayed as **School Census Summer 2022**. This description can be edited, if required, e.g. to identify a dry run.

WARNING: Each description used must be unique. An error message is displayed if SIMS identifies a duplicate description.

A unique description also helps to identify the required return when viewed in the **Census Return** browser and can be particularly useful when creating dry runs, or copies of existing returns.

Calculating All Details

Clicking the **Calculate All Details** button extracts the required information from SIMS and displays the results in the applicable panels of the **Census Return Details** page.

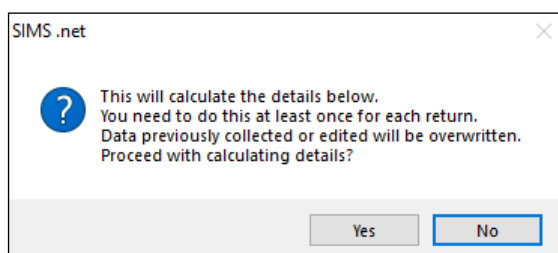
IMPORTANT NOTE: You must calculate all details at least once to populate the various panels for each return.

Do *not* use the **Calculate All Details** button more than once if you wish to keep any changes you have made. Clicking the **Calculate All Details** button overwrites any previously collected or edited data (in *every* panel where details are calculated automatically) with the data currently stored in SIMS.

Any details that are calculated automatically should be checked and edited, if required.

1. Click the **Calculate All Details** button.

A message advises that any existing data currently shown on the **Census Return Details** page will be overwritten.



2. Click the **Yes** button to calculate all details.

At this point, depending on the number of pupil/students in the school, there might be a short delay while details are calculated.

The applicable panels on the **Census Return Details** page are then populated with data.

3. The return can be saved at any point by clicking the **Save** button.

Editing School Information

The **School Information** panel displays details that have previously been recorded on the **School Details** page in SIMS (**Focus | School | School Details**). The information displayed might vary depending on your school and the details entered, e.g. Academy specific information.

03| Completing the School Census Summer Return

The details displayed are read-only but can be amended, if necessary, via the **School Detail** button.

2 School Information

School Name: Dean Special School

LA: 886 Establishment Number: 6676

Telephone: 01234 543211 URN:

School E-mail Address: bpwm.ux@eainfoin.com

School Phase: SP Special

School Type: Special School

Governance: Community Intake Type: Special

Lowest NC Year: R Highest NC Year: 14

School Detail

1. If any details are missing or incorrect, click the **School Detail** button to display the **School Detail** dialog, where information applicable to your school is displayed.

School Details - Dean Special School

Save Undo Help

1 Establishment 2 Address 3 Contact Details 4 Sites 5 Special School Information 6 Documents 7 Childcare 8 Support Unit Details

1 Establishment

School Name: Dean Special School

LA: 886 Kent

Establishment Number: 4676

Unique Reference Number: 012345

UK Provider Reference Number:

School Phase: Special

School Type: Special School

School Governance: Community

Intake Type: Special

Previous School Name:

Previous Estab Number:

Previous URN Number:

Boarding Pupils: ☐ Nursery Class: ☐ Special Class or Unit: ☐

Head Teacher: Mr Rylan Nelson Calvetti

Curriculum Years: R 14

Date Name Changed:

Earliest DOA:

Date Number Changed:

Main Contact: R Amo

OK Cancel

2. Add or amend the school details, selecting from the drop-down lists where applicable.

NOTE: The **School Name**, **LA** number, **Establishment Number**, **School Phase** and **Curriculum Years** were set up when SIMS was installed. If any of these details are incorrect, please contact your Local Support Unit for assistance.

3. Ensure that the establishment's six digit **Unique Reference Number** (URN) is entered. The number is available via the Get information about schools website (<https://get-information-schools.service.gov.uk/>), which is a register of schools and colleges in England.
4. Click the **Save** button, then click the **OK** button to return to the **Census Return Details** page, where the updated details are displayed.

Information for Academies

2 School Information							
School Name	Green Abbey School		Previous Name	Previous Name School	Date Changed	31/07/2017	
LA	823	Establishment Number	4321	Previous Estab Number	1234	Earliest DOA	17/07/2017
Telephone	851234	URN		Previous URN		Date Changed	
School E-mail Address	office@ga.org.uk						
School Phase	<input type="text" value="SS"/> <input type="text" value="Secondary"/>						
School Type	<input type="text" value="Academies"/>						
Governance	<input type="text" value="Academies"/>		Intake Type	<input type="text" value="Comprehensive"/>			
Lowest NC Year	<input type="text" value="7"/>		Highest NC Year	<input type="text" value="13"/>			
<input type="button" value="School Detail"/>							

Academies should also ensure that the following information is recorded, if applicable:

- The **School Type** and **School Governance**.
Select **Academies** from the applicable drop-down lists.
- The **Previous Name** and **Date Name Changed**.
- The **Previous Estab Number** and **Earliest DOA** (date of admission).
This information is used by School Census. If the establishment number (DfE number) has changed for sponsor-led Academies, historical information is not collected, and the earliest date of admission is reported in the School Census.
- The **Previous URN Number** (used by other census returns) and **Date Number Changed**.
This information is used by the School Workforce Census. For all types of Academies opened in the collection period, the date that the establishment's URN changed is used to determine when the academy was formed. Historical information is not collected from before the date the URN changed.

Managing Early Years Data

Applicable to schools with Early Years children only

More information about the early years national funding formula (allocations and guidance) is available on the GOV.UK website (<https://www.gov.uk/education/early-years-funding>).

Editing Early Years

Early Years data is collected from all schools that have early years pupil/students on-roll on census day. The following items are collected:

- Hours at Setting
- Funded Hours
- Disability Access Fund
- 30 Hour Code
- Extended Funded Hours.

NOTE: Disability Access Fund, 30 Hour Code and Extended Funded Hours are not collected in the census for pupil/students aged two at 31/03/2022.

Funded Hours and Hours at Setting

Funded universal free entitlement hours are the total number of free childcare hours that a child receives. All three and four year old pupil/students are eligible for 15 hours funded child care a week. Advice about the eligibility of two year old children for funded childcare can be found on the DfE website (<https://www.gov.uk/help-with-childcare-costs/free-childcare-2-year-olds>).

Hours at Setting include funded free entitlement hours (as described previously) plus any additional hours funded by other means.

The hours collected in this return are for the week in which the census day falls.

Date of Birth Ranges	School Type and National Curriculum Year Group	Funded Universal Free Entitlement Hours Maximum Entitlement
01/09/2017 to 31/03/2020 inclusive	All relevant schools and year groups.	15 hours
01/04/2017 to 31/08/2017 inclusive	For pupils in National Curriculum Year groups E1, E2, N1 and N2 only.	15 hours

Disability Access Fund

The Disability Access Fund (DAF) is payable as a lump sum once a year and awarded to three and four year old pupil/students who meet the following criteria:

- They are in receipt of child Disability Living Allowance (DLA) and
- They access their entitlement to free early learning and childcare, e.g. funded hours.

Disability Access Fund data is collected in this return for pupil/students who are in receipt of the fund on census day.

Date of Birth Ranges	School Type and National Curriculum Year Group
01/09/2017 to 31/03/2019 inclusive	All relevant schools and year groups.
01/04/2017 to 31/08/2017 inclusive	For pupils in National Curriculum Year groups E1, E2, N1 and N2 only.

Additional information about the Disability Access Fund is available via the DfE website (<https://www.gov.uk/education/early-years-funding>).

Extended Funded Hours and 30 Hour Code

Extended Funded Hours are the number of hours that a child can receive in addition to the initial 15 funded hours. Extended Funded Hours are applicable to three and four year old pupil/students only.

Extended Funded Hours can double the original 15 hours of free childcare to 30 hours a week, i.e. 15 funded free entitlement hours + 15 extended entitlement hours = 30 hours, provided that the following criteria are met:

- Both parents must be working (or the sole parent is working in a lone parent family) and live in England.
- Each parent earns, on average, a weekly minimum equivalent to 16 hours at National Minimum Wage or National Living Wage.
- Each parent must have an annual income of less than the specified amount.

Parents who meet the extended funded hours criteria must obtain a unique code from the Tax Office (HM Revenue & Customs), then provide it to the school, together with other details, to confirm their eligibility for extended childcare hours.

The 11 digit **30 Hour Code** and the number of extended funded hours are collected in this return for the week in which the census day falls.

Date of Birth Ranges	School Type and National Curriculum Year Group	Maximum Funded Universal Free Entitlement and Extended Free Entitlement Hours
01/09/2017 to 31/03/2019 inclusive	Applicable to all relevant schools and year groups. A valid 30 Hour Code must be provided.	15 funded universal free entitlement hours plus 15 extended free entitlement hours equals 30 hours.
01/04/2017 to 31/08/2017 inclusive	For pupils in National Curriculum Year groups E1, E2, N1 and N2 only. A valid 30 Hour Code must be provided.	15 funded universal free entitlement hours plus 15 extended free entitlement hours equals 30 hours.

Extended Funded Hours information provided by the DfE can be found on their website (<https://www.gov.uk/government/publications/30-hours-free-childcare-1a-and-early-years-provider-guide>).

Recording Early Years

The required data can be recorded:

- via the **Edit** button in the **Early Years** panel
- via **Tools | Statutory Returns Tools | Update Early Years - Update Early Years** page. The data in the **Early Years** panel must be refreshed by clicking the **Recalculate** button after using the Update Early Years routine.

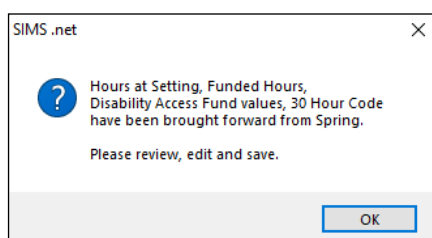
03| Completing the School Census Summer Return

If data has been recorded previously, the values are displayed in the read-only **Early Years** panel. Only cohorts applicable to your school are displayed.

3 Early Years												
<div> <div>Edit</div> <div>Recalculate</div> </div>												
Name	Date of Birth	AdNo.	YTI	Reg	Age at 31/08/2021	Age at 31/12/2021	Age at 31/03/2022	Hours at Setting	Funded Hours	Disability Access Fund	30 Hour Code	Extended Funded Hours
Atkins,Eve	28/07/2018	001840	N2	PM	3	3	3	15	15	No		
Birkett,Scott	03/03/2018	001841	N2	AM	3	3	4	15	15	No		
Cardale,Luke	17/05/2018	001842	N2	PM	3	3	3	30	15	No	10038877533	
Carmichael,Meghan	21/06/2018	001843	N2	AM	3	3	3			No		
Cioabanu,Mitica	23/09/2017	001844	N2	AM	3	4	4			No		
Clifton,Rhianna	25/04/2018	001845	N2	PM	3	3	3			No		
Dickinson,Adam	05/12/2017	001846	N2	PM	3	4	4			No		

NOTE: Although SIMS allows schools to enter **Disability Access Fund**, **30 Hour Code** and **Extended Funded Hours** for pupil/students aged 2 at 31/03/2022, this information is not included in the return file because it is not required by the DfE. SIMS do not enforce such DfE rules in the user interface because this is a relatively complex task and experience has shown that such rules can change at short notice.

1. In the **Early Years** panel, click the **Edit** button to display a message informing you that data has been brought forward from the previous census.



2. Click the **OK** button to display the **Update Early Years** page. By default, the current term is displayed in the **Census** panel.

TIP: To view the data recorded for a previous term (in the current academic year), select the required **Term** from the drop-down list.

Update Early Years

Save

Undo

Census

TermSummer 2022

Pupils View

Age at31/08/2021

All

YTI

All

Reg

All

Status

All

Pupils

Disability Access Fund, 30 Hour Code and Extended Funded Hours are NOT collected in the census for pupils aged 2 at 31/03/2022

Name	Date of Birth	AdNo.	YTI	Reg	Age at 31/08/2021	Age at 31/12/2021	Age at 31/03/2022	Hours at Setting	Funded Hours	Disability Access Fund	30 Hour Code	Extended Funded Hours
Atkins,Eve	28/07/2018	001840	N2	PM	3	3	3	15	15	No		
Birkett,Scott	03/03/2018	001841	N2	AM	3	3	4	15	15	No		
Cardale,Luke	17/05/2018	001842	N2	PM	3	3	3	30	15	No	10038877533	
Carmichael,Meghan	21/06/2018	001843	N2	AM	3	3	3			No		
Cioabanu,Mitica	23/09/2017	001844	N2	AM	3	4	4			No		

3. To add or edit the number of **Hours at Setting, Funded Hours** and **Extended Funded Hours** for an individual pupil/student, select the required criteria in the **Pupils View** panel.

In the **Pupils** panel, highlight the required pupil/student, click the applicable cell and then enter the required number of hours.

IMPORTANT NOTES: Values for **Funded Hours, Hours at Setting** and **Extended Funded Hours** should be entered using two decimal places. For example, 1 hour 15 minutes must be entered as 1.25. Zero (0) is an accepted value.

If the value entered is within the range accepted by SIMS but is higher than what the DfE expects, a validation error is displayed when the return is created and validated. An explanation as to why the value is higher should be recorded on the COLLECT Portal.

4. If most of the pupil/students are receiving the same number of hours, the following method can be used to populate the column quickly:
 - a. In the **Pupils View** panel, select the required year group from the Year Taught In (**YTI**) drop-down list. The selected pupil/students only are displayed in the **Pupils** panel.
 - b. Right-click in the **Pupils** panel, then select **Select All** from the drop-down list.
 - c. Click in one of the highlighted cells of the column you wish to populate, i.e. **Hours at Setting, Funded Hours** or **Extended Funded Hours**, then enter the number of hours that is applicable to most pupil/students.
This number is then entered automatically for all the selected pupil/students.
 - d. Click to the right of the grid to deselect all.
 - e. Edit the entry for each pupil/student who is receiving a different number of hours. This is achieved by highlighting the required pupil/student, clicking the associated **Hours at Setting, Funded Hours** or **Extended Funded Hours** cell (as applicable) then entering the required number.
5. Indicate whether the pupil/students are in receipt of the **Disability Access Fund**. Click the applicable cell then select **Yes** or **No** from the drop-down list.
6. Enter the 11 digit **30 Hour Code** in the applicable cell, if in receipt of extended funded hours.

IMPORTANT NOTE: Each pupil/student must have a different 30 hour code. Ensure that all 11 digits are entered.

7. Click the **Save** button.
If there are any pupil/students for whom zero hours have been recorded, a message is displayed. Click the **Yes** button to save the data or the **No** button to return to the **Update Hours** page, where the number of hours can be entered.
8. Click the **OK** button to return to the **Census Return Details** page, where the updated hours are displayed.

IMPORTANT NOTES:

If, while completing the return, any of the following processes are performed, click the **Recalculate** button (located at the top right-hand side of the **Early Years** panel) to ensure that the up-to-date data is displayed:

- any information is updated via **Tools | Statutory Return Tools | Update Early Years**
- a new pupil/student is added in SIMS
- a pupil/student's date of birth is amended.

Please note that when information is updated via the **Edit** button, the **Early Years** panel is refreshed automatically.

Using the Status to determine if Hours at Setting or Funded Hours are recorded

- On the **Census Return Details** page, click the **Edit** button (located in the **Early Years** panel) to display the **Update Early Years** page.
- In the **Pupils View** panel, ensure that the required **Age at** date, **YTI** and **Reg** group are selected and then select **No Hours at Setting** (or **No Funded Hours**) from the **Status** drop-down list.

Only pupil/students who do not have an entry for **Hours at Setting** (or **Funded Hours**) are displayed.



- Enter the required values for these pupil/students as described previously.
- Click the **Save** button.

Editing Pupil/Students with Top-Up Funding

Top-up funding is supplied to schools, in most cases by the Local Authority, to meet the additional costs of support for high needs pupil/students.

The **Top-up Funding** panel enables you to record the on-roll pupil/students for whom your school is receiving top-up funding on census day.

If the pupil/students with top-up funding have been recorded previously via **Tools | Statutory Return Tools | Update Top-Up Funding**, the data is displayed in the **Top-up Funding** panel.

3 Top-up Funding						
 Edit			 Recalculate			
Surname	Preferred Surname	Forename	YTI	Reg	SEN	Eve ^
Abbess	Abbess	Graham	13	G	E	No
Ackton	Ackton	Stephen	10	10E	E	No
Andrews	Andrews	Jasmine	12	M	E	No
Chappling	Chappling	Martin	10	10D	E	No
Hudson	Hudson	Sarah	8	8D	E	No
Lawton	Lawton	Thomas	13	N	E	No
Mugarisanwa	Mugarisanwa	Sylvia	12	G	E	No v

The information displayed in the **Top-up Funding** panel is read-only. Updating top-up funding information, e.g. adding or removing a pupil/student, must be done via the **Edit** button.

1. Click the **Edit** button to display the **Update Pupil (or Student)s with Top-up Funding** dialog. The pupil/students currently recorded as having top-up funding are displayed in the **Top-up Funding** list (located in the bottom half of the page).

Update Students with Top-up Funding

Update

Term: Summer 2022 Students On-Roll on Census Day

Surname: Forename: YTI: All Reg: All

Preferred Surname: SEN: <Any> Ever in care at this school: <Any> Search

Top-up Funding

Add Remove

Surname	Preferred Surname	Forename	YTI	Reg	SEN	Ever in Care
Abbess	Abbess	Graham	13	G	E	No
Ackton	Ackton	Stephen	10	10E	E	No
Andrews	Andrews	Jasmine	12	M	E	No
Chappling	Chappling	Martin	10	10D	E	No
Hudson	Hudson	Sarah	8	8D	E	No
Lawton	Lawton	Thomas	13	N	E	No
Mugarisanwa	Mugarisanwa	Sylvia	12	G	E	No
White	White	Aurora	8	8D		No

2. Use the **Students On-Roll on Census Day** search criteria to locate the additional pupil/students you wish to record as having top-up funding.

***TIP:** Click the **Search** button to display a list of all pupil/students who have not been defined as having top-up funding. Alternatively, enter all or part of the required search criteria then click the **Search** button.*

Term: Summer 2022 Students On-Roll on Census Day

Surname: we Forename: YTI: 8 Reg: All

Preferred Surname: SEN: <Any> Ever in care at this school: <Any> Search

Top-up Funding

Add Remove

Surname	Preferred Surname	Forename	YTI	Reg	SEN	Ever in Care
Webster	Webster	Mark	8	8E		No
Weddle	Weddle	Kameron	8	8D		No

03| Completing the School Census Summer Return

3. Highlight the pupil/student(s) who you want to record as having top-up funding, then click the **Add** button to move the selected pupil/student(s) to the **Top-up Funding** list.

One or more pupil/students can be selected using the **Ctrl+click** or **Shift+click** functionality.

Term: Summer 2022 Students On-Roll on Census Day

Surname: Forename: YTI: All Reg: All

Preferred Surname: SEN: <Any> Ever in care at this school: <Any> Search

Top-up Funding

Add Remove

Surname	Preferred Surname	Forename	YTI	Reg	SEN	Ever in Care
Abbess	Abbess	Graham	13	G	E	No
Ackton	Ackton	Stephen	10	10E	E	No
Andrews	Andrews	Jasmine	12	M	E	No
Chappling	Chappling	Martin	10	10D	E	No
Hudson	Hudson	Sarah	8	8D	E	No
Lawton	Lawton	Thomas	13	N	E	No
Mugarisanwa	Mugarisanwa	Sylvia	12	G	E	No
Webster	Webster	Mark	8	8E		No
Weddle	Weddle	Kameron	8	8D		No
White	White	Aurora	8	8D		No
Whiting	Whiting	Courtney	8	8C		No

4. To remove a pupil/student from the **Top-up Funding** list, highlight the required pupil/student, then click the **Remove** button. The pupil/student's record is moved to the **Students On-Roll on Census Day** list, from where it can be reselected, if required.
5. Click the **Update** button to save the data and arrange the list of pupil/students in **Surname** order.
6. Click the **OK** button located at the bottom right-hand side of the screen to return to the **Census Return Details** page, where the updated information is displayed in the **Top-up Funding** panel.



Additional Resources:

Preparing for the School Census Summer 2022 Return guide

Editing Pupil/Student Post Looked After Arrangements

The Post Looked After Arrangements routine provides schools with the ability to record whether pupil/students who are on-roll on census day were looked after immediately before adoption or prior to being the subject of a residence or special guardianship order.

If the pupil/students with post looked after arrangements (PLAA) have been recorded previously via **Tools | Statutory Return Tools | Update Student Post Looked After Arrangements**, the data is displayed in the **Post Looked After Arrangements** panel.

1. Click the **Recalculate** button (in the **Post Looked After Arrangements** panel) to ensure that all pupil/students who already have a PLAA status are displayed.

4 Post Looked After Arrangements

[Edit](#) [Recalculate](#)

Surname	Preferred Surname	Forename	YTI	Reg	Ever in C.	Post Looked After Arrangements
Jump	Jump	Frederick	10	10B	Yes	Ceased to be looked after through a Child Arrangement Order (CAO)
O'Connor	O'Connor	Marc	9	9A	Yes	Ceased to be looked after through Adoption
Simons	Simons	Christian	8	8C	Yes	Ceased to be looked after through a Residence Order (RO)
Stevens	Stevens	Holly	8	8E	Yes	Ceased to be looked after through Adoption

The information displayed in the **Post Looked After Arrangements** panel is read-only. Updating the information, e.g. editing the PLAA status or adding a pupil/student, must be done via the **Edit** button.

2. Click the **Edit** button to display the **Update Pupil (or Student)s Post Looked After Arrangements** page. Any pupil/students currently recorded as having PLAA are displayed in the **Post Looked After Arrangements** list located in the bottom half of the page.

Update Students Post Looked After Arrangements

[Update](#) [Links](#) [Help](#) [Close](#)

Term: Summer 2022 Students On-Roll on Census Day

Surname: Forename: YTI: All

Preferred Surname: Reg: All Ever in Care at this school: <Any> [Search](#)

Post Looked After Arrangements [Add](#) [Remove](#)

Surname	Preferred Surname	Forename	YTI	Reg	Ever in Care	Post Looked After Arrangements	Evidence Obtained
Franklin	Franklin	Ethan	8	8E	Yes	Ceased to be looked after through Adoption	<input checked="" type="checkbox"/>
Ackton	Ackton	Stan	7	7E	No	Ceased to be looked after through a Special Guardianship Order (SGO)	<input checked="" type="checkbox"/>
Fane	Fane	Alin	7	7B	No	Ceased to be looked after through a Residence Order (RO)	<input type="checkbox"/>
Roche	Roche	Jackson	10	10C	No	Ceased to be looked after through a Child Arrangement Order (CAO)	<input checked="" type="checkbox"/>

3. Use the **Students On-Roll on Census Day** search criteria to locate the additional pupil/students you wish to record as having PLAA.

03| Completing the School Census Summer Return

TIP: Click the **Search** button to display a list of pupil/students who have not been defined as having PLAA. Alternatively, enter all or part of the required search criteria then click the **Search** button.

Term: Summer 2022 Students On-Roll on Census Day

Surname: smy Forename: YTI: All

Preferred Surname: Reg: All Ever in Care at this school: <Any> Search

Surname	Preferred Surname	Forename	YTI	Reg	Ever in Care
Smyth	Smyth	Cheryl	9	9A	No
Smyth	Smyth	Jonathan	9	9B	No
Smyth	Smyth	Rhianna	9	9C	No
Smythye	Smythye	Vincent	10	10F	No

- Highlight the pupil/students who you want to record as having PLAA, then click the **Add** button to move the selected pupil/students automatically to the **Post Looked After Arrangements** list.

One or more pupil/students can be selected using the **Ctrl+click** or **Shift+click** functionality.

Post Looked After Arrangements Add Remove

Surname	Preferred Surname	Forename	YTI	Reg	Ever in Care	Post Looked After Arrangements	Evidence Obtained
Franklin	Franklin	Ethan	8	8E	Yes	Ceased to be looked after through Adoption	<input checked="" type="checkbox"/>
Ackton	Ackton	Stan	7	7E	No	Ceased to be looked after through a Special Guardianship Order (SGO)	<input checked="" type="checkbox"/>
Fane	Fane	Alin	7	7B	No	Ceased to be looked after through a Residence Order (RO)	<input type="checkbox"/>
Roche	Roche	Jackson	10	10C	No	Ceased to be looked after through a Child Arrangement Order (CAO)	<input checked="" type="checkbox"/>
Abdullah	Abdullah	Tamwar	8	8A	No	Ceased to be looked after through Adoption	<input type="checkbox"/>
Smyth	Smyth	Cheryl	9	9A	No	Ceased to be looked after through Adoption	<input type="checkbox"/>
Smythye	Smythye	Vincent	10	10F	No	Ceased to be looked after through a Special Guardianship Order (SGO)	<input type="checkbox"/>
						Ceased to be looked after through a Residence Order (RO)	
						Ceased to be looked after through a Child Arrangement Order (CAO)	

- For each pupil/student added to the **Post Looked After Arrangements** list, select the post looked after arrangement status by clicking in the applicable cell in the **Post Looked After Arrangements** column, then selecting the required status from the drop-down list:
 - Ceased to be looked after through Adoption**
 - Ceased to be looked after through a Special Guardianship Order (SGO)**
 - Ceased to be looked after through a Residence Order (RO)**
 - Ceased to be looked after through a Child Arrangement Order (CAO).**

NOTE: **Ceased to be looked after through a Residence Order (RO)** has been replaced by **Ceased to be looked after through a Child Arrangement Order (CAO)**.

You do not need to change any existing residence orders but new post looked after arrangements must be recorded as child arrangement orders.

6. Select the **Evidence Obtained** check box if documents have been obtained that provide evidence of the post looked after arrangements.

If you indicate that evidence has been obtained, ensure that the applicable documents are stored securely either outside of SIMS or within the Document Management Server.

*NOTE: **Evidence Obtained** is not collected in the School Census return but should be recorded as proof of DfE/Ofsted compliance.*

7. To remove a name from the list, highlight it then click the **Remove** button. The record is moved to the **Students On-Roll on Census Day** list, from where it can be reselected, if required.
8. Click the **Update** button to save the information and arrange the list of pupil/students in surname order.
If you have indicated that evidence has been obtained, you are reminded to ensure that the necessary documents are stored securely outside of SIMS or within the Document Management Server.
9. Click the **OK** button to continue.
10. Click the **OK** button (located at the bottom right-hand side of the screen) to return to the **Census Return Details** page, where the updated information is displayed in the **Post Looked After Arrangements** panel.



Additional Resources:

Preparing for the School Census Summer 2022 Return guide



More Information:

Post Looked After Arrangements Report on page 47

Editing Funding and Monitoring

The pupil level Update Funding and Monitoring functionality is provided to enable schools to record aspects of the Education Recovery Package.

The information can be recorded via the **Tools** menu and maintained at any time during the academic year.

The information required is based on individual pupil/students:

- Pupil/student in receipt of school-led tutoring programme: Applicable to all schools (except Nursery schools), with the appropriate year groups or age groups, i.e. pre-16. For pupil/students in National Curriculum Year Actual 1 to 11, or aged 5 to 15 as at 31/08/2021 in National Curriculum Year Actual 'X' for special schools. (Funding and Monitoring code = **01**.)
- Pupil/student in receipt of 16 to 19 tuition fund: Applicable to Secondary, All-Through and Pupil Referral Units or Alternative Provision schools with a sixth form. For pupil/students in National Curriculum Year Actual 12 and above with current single registration (**C**) or current main dual registration (**M**). Pupil Referral Units or Alternative Provision for any pupil/student with the following enrolment status: **C, M, F** or **O**. (Funding and Monitoring code = **21**.)

- Pupil/student repeating up to one full final year of 16 to 19 funded provision: Applicable to Secondary, All-Through and Pupil Referral Units or Alternative Provision schools with a sixth form. For pupil/students in National Curriculum Year Actual 13 and above with current single registration (**C**) or current main dual registration (**M**). Pupil Referral Units or Alternative Provision for any pupil/student with the following enrolment status: **C**, **M**, **F** or **O**. (Funding and Monitoring code = **22**.)

Detailed guidance about the expectations and conditions attached to school-led tutoring funding is available on the GOV.UK website (<https://www.gov.uk/government/publications/school-led-tutoring-conditions-of-grant>).

What Data should be entered?

NOTE: Before entering tutoring hours, ensure that School Led Tutoring is selected for applicable pupil/students only. When a tick is displayed, values can be entered in the corresponding 'cumulative hour' cells.

The following table describes the values that should be entered in each 'hours' column.

	Cumulative Hrs at Aut Census	Cumulative Hrs at Spr Census	Cumulative Hrs at Sum Census	Total Hrs for the Acad Yr
Description of expected values	All hours of tutoring from 01/08/2021 to the Autumn census date (04/10/2021).	All hours of tutoring from 01/08/2021 to the Spring census date (20/01/2022). The number of hours entered must be greater than or equal to the Autumn hours.	All hours of tutoring from 01/08/2021 to the Summer census date (19/05/2022). The number of hours entered must be greater than or equal to the Spring hours.	All hours of tutoring from 01/08/2021 to the Summer census date plus any additional hours that occurred after the Summer census date. The number of hours entered must be greater than or equal to the Summer hours.
Scenario	Five hours tuition received from 01/08/2021 to 04/10/2021.	Three hours received after 04/10/2022 to 20/01/2022.	Two hours received after 20/01/2022 to 19/05/2022.	One additional hour after 19/05/2022 to 31/07/2022. Not applicable to the census but required for ESFA reporting.
Example values for each column	5	8	10	11

A red 'cumulative hours' cell indicates that the value entered has failed the validation. A message providing more details is displayed in the status bar at the bottom of the **Update Funding and Monitoring** page.

Checking and Updating Funding and Monitoring

If funding and monitoring details have been recorded previously via **Tools | Statutory Return Tools | Update Funding and Monitoring**, the information is displayed in the **Funding and Monitoring** panel.

5 Funding and Monitoring

Edit

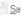
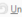
Recalculate



Name	YTI	16-19 Tuition Fund	Repeating Year 13	School Led Tutoring	Cumulative Hrs at Aut Census	Cumulative Hrs at Spr Census	Cumulative Hrs at Sum Census	Total Hrs for the Acad Yr	
Aaron,Liz	11			✓	4	9	14	15	
Aaron,Sophie	11			✓	5	10	15	15	
Abhra,Abjit	7			✓	3	8	13	13	
Acton,Jordan	13	✓							
Chapman,Amber	8			✓					
Mollohan,Keara	7			✓					
Smith,Aria	9			✓					

*NOTE: Only pupil/students with funding and monitoring information are displayed in the **Funding and Monitoring** panel.*

1. Click the **Recalculate** button (in the **Funding and Monitoring** panel) to ensure that the latest details are displayed.
2. If you wish to update the information, click the **Edit** button to display the **Update Funding and Monitoring** page.

Update Funding and Monitoring

 Save
  Undo

 Help
  Urgin

Census

Academic Year 2021/2022
 On roll and leavers from 01/08/2021 to 31/07/2022

Students View

Age at 31/08/2021 All
 YTI All
 Year Group All
 Reg All
 SEN All
 Deprivation Pupil Premium All
 FSMEver6 All
 Pupil Premium Indicator All

Students

Name	Date of Birth	Age at 31/08/2021	YTI	Year Group	Reg	Enrolment Status	DOL	SEN	Dep PP	FSMS	PP Ind	16-19 Tuition Fund	Repeating Year 13	School Led Tutoring	Cumulative Hrs at Aut Census	Cumulative Hrs at Spr Census	Cumulative Hrs at Sum Census	Total Hrs for the Acad Yr	Notes
Aaron,Chris	01/09/2005	15	11	Year 11	11A	Single Registration			2021/2022	Yes	2021/2022								
Aaron,Jason	08/03/2006	15	11	Year 11	11B	Single Registration			2021/2022	No	2021/2022								
Aaron,Liz	01/09/2005	15	11	Year 11	11C	Single Registration			2021/2022	Yes	2021/2022			✓	4	9	14	15	
Aaron,Sophie	01/09/2005	15	11	Year 11	11D	Single Registration			2021/2022	Yes	2021/2022			✓	5	10	15	15	
Abdullah,Tamwar	12/01/2009	12	8	Year 8	8A	Single Registration		K		No									
Abhra,Abjit	20/11/2009	11	7	Year 7	7A	Single Registration				No				✓	3	8	13	13	
Abhra,Alisha	20/11/2009	11	7	Year 7	7C	Single Registration				No									
Abimbola,Deon	14/05/2008	13	9	Year 9	9A	Single Registration			2021/2022	Yes	2021/2022								
Ackton,Stan	22/03/2010	11	7	Year 7	7E	Single Registration		K		No									
Ackton,Stephen	12/03/2006	15	11	Year 11	11E	Single Registration		E	2021/2022	Yes	2021/2022								
Acton,Jordan	11/02/2004	17	13	Year 13	G	Single Registration			2017/2018	No	2017/2018	✓							

3. In the **Pupil (or Student) View** panel, specify the required filters. The content of the **Pupil (or Student)** panel changes to reflect the options selected.

Read-only pupil/student information is displayed in the columns on the left-hand side of the **Pupil (or Student)** panel. This information is shown as at the system date.

Cells with a white background are editable.

4. Right-click anywhere in the **16-19 Tuition Fund** column, then select the required option from the pop-up menu.
 - a. If most or all of the pupil/students have been receiving tuition funding, select the **Check All** option.
 - b. Any pupil/students who have not been receiving tuition funding can then be deselected by clicking the **16-19 Tuition Fund** cell adjacent to their name.
5. Specify which pupil/students are **Repeating Year 13** by right-clicking anywhere in the column, then selecting the required option from the pop-up menu.
 Bulk or Individual entry can be achieved using the same method as described for 16-19 tuition funding.
 Selecting the Repeating Year 13 option creates two programme aims, one for the completed study programme and one for the repeating year. This can be checked by running the Post-16 Programmes of Study and Learning Aims report via the **Census Return Details** page.
6. Right-click anywhere in the **School Led Tutoring** column, then select the required option from the pop-up menu.
 - a. If most or all of the pupil/students have been receiving school-led tutoring, select the **Check All** option.
 - b. Any pupil/students who have not been receiving school-led tutoring can then be deselected by clicking the **School Led Tutoring** cell adjacent to their name.
7. When a tick is entered in a **School Led Tutoring** cell, the corresponding 'cumulative hour' cells are then editable. The number of tutoring hours (to the nearest 0.5) that the pupil/student has received as at the applicable census date should be entered.

IMPORTANT NOTE: To deselect school-led tutoring, all of the existing hours must be removed for the selected pupil/student(s). Clicking the **Undo** button reverts the changes, if required.

8. In the **Total Hrs for the Acad Yr** column, enter the total number of school led tutoring hours for the whole academic year. The value entered must be greater than or equal to that entered in the **Cumulative Hrs at Sum Census** column.

A red cell indicates that the value is less than that entered in the **Cumulative Hrs at Sum Census** column and must be amended.

*NOTE: The values entered in the **Total Hrs for the Acad Yr** column are not reported in the census. This functionality has been provided to enable schools to record data required by the Education and Skills Funding Agency (ESFA) (<https://www.gov.uk/government/organisations/education-and-skills-funding-agency>).*

9. Enter **Notes**, if required. This information is for your school's use and is not collected in the census.
10. Click the **Save** button and then click the **OK** button to return to the **Census Return Details** page.

NOTE: All validation errors (red cells) must be resolved before saving the data.

DfE guidance about Learner funding and monitoring (FAM) is available on the GOV.UK website (<https://www.gov.uk/guidance/complete-the-school-census/data-items-2021-to-2022#learner-funding-and-monitoring-fam>).

Managing School Dinners Taken on Census Day

Applicable to schools with pupils in Reception, Year 1 and Year 2

NOTE for Special schools: The School Dinner Taken routine is applicable to Special schools that have on-roll pupils who have taken a school dinner on census day and who are in Year Taught In Reception, Year 1 or Year 2 and those in Year Taught In X aged four to six who were born between 01/09/2014 and 31/08/2017 inclusive.

All pupils in Reception, Year 1 and Year 2 in English state-funded schools are offered a Universal Infant School Meal, i.e. a hot meal at lunchtime. This applies to Academies, Free Schools and Pupil Referral Units, as well as to schools maintained by the local authority. The School Census Summer 2022 Return collects information about pupils who receive a Universal Infant School Meal (school dinner) on census day.

The **School Dinner Taken** panel displays all pupils in Reception, Year 1 and Year 2 who are on-roll on census day. The options available in the panel enable you to record pupils who have taken a Universal Infant School Meals on census day, so that accurate data can be included in the census.

*NOTES: The **Reference Date** is provided so that your school can report school dinners taken on an alternative date to census day, if required.*

*The pupils listed in the **School Dinner Taken** panel are those who are on-roll on census day. Whereas the data calculated via the **Calculate From Attendance** and the **Calculate From Dinner Money** buttons is based on the reference date.*

If your school uses SIMS Dinner Money or SIMS Attendance, the number of dinners taken on census day can be calculated using the data recorded when using these modules.

03| Completing the School Census Summer Return

If either or both of these modules are not in use, the applicable **Calculate From** button(s), as displayed in the following graphic, are not displayed but the information can be recorded manually.

The screenshot shows the 'School Dinner Taken' form. Callout 1 points to the 'Reference Date' field (19/05/2022). Callout 2 points to the 'Group By' dropdown. Callout 3 points to the 'Calculate From Attendance' button. Callout 4 points to the 'Calculate From Dinner Money' button. Callout 5 points to the 'Reset' button. Callout 6 points to the 'Total Taken' and 'Total Not Taken' fields.

Surname	Forename	YTI	Reg Group	Enrol Status	School Dinner Taken
Abbott	Jessica	R	ASH	Single Registration	
Abhra	Shaqib	R	ELM	Single Registration	
Ackton	Charlotte	R	PINE	Single Registration	
Adams	Nancy	2	2JB	Single Registration	
Adams	Sadie	1	ELM	Single Registration	
Alala	Candis	2	2GH	Single Registration	
Alala	Michael	R	PINE	Single Registration	
Alyona	Tatyana	1	PINE	Single Registration	
Andrews	Richard	1	ASH	Single Registration	
Barden	Olivia	2	2JB	Single Registration	
Bartram	Piers	1	ASH	Single Registration	
Bateman	Vincent	2	2GH	Single Registration	
Bennet	Eloise	1	PINE	Single Registration	
Benson	Chantal	R	ELM	Single Registration	

Total Taken: 0 Total Not Taken: 178

- | | |
|---|--|
| 1 | By default, the Reference Date is set to 19/05/2022 (census day). If, due to exceptional circumstance, e.g. flooding, pupils were unable to take a school dinner on census day, the reference date can be changed to a date that reflects the situation. However, the reference date must be within the Summer term date range. |
| 2 | Click the required column header to sort the data. |
| 3 | The Calculate From Attendance button is displayed only if SIMS Attendance is in use. |
| 4 | The Calculate from Dinner Money button is displayed only if SIMS Dinner Money is in use. |
| 5 | When the Reset button is clicked all existing ticks are removed from the School Dinner Taken column enabling you to start the process again. |
| 6 | The Total Taken and Total Not Taken provide an indication of whether the number of school dinners taken is correct or whether edits are required. |

After the return has been created and validated, the School Dinner Taken detail report can be run to assist with the checking of results.



More Information:

School Dinner Taken Report on page 45

Using Dinner Money to Calculate School Dinners Taken on Census Day

If SIMS Dinner Money is in use, the Dinner Money data recorded for census day can be used to calculate the number of school dinners taken on census day.

Many users of SIMS Dinner Money also use SIMS Attendance. If this is the case the **Calculate From Attendance** button is also displayed.

However, it is recommended that the Calculate From Dinner Money routine is used in the first instance. This is because the Calculate From Attendance routine looks at all pupils with a present or late attendance mark on census day morning. These pupils could be taking any sort of meal on census day, e.g. going home for lunch, pack lunch brought from home, as well as meals provided by the school. The School Census return is only interested in school meals provided by the school.

SIMS Dinner Money takes into account these different meal types and populates the **School Dinner Taken** column with ticks where meals provided by the school only have been taken.

School Dinner Taken

Reference Date: 19/05/2022 All pupils including those eligible for FSM should be included below

☒ Group By Calculate From Attendance Calculate From Dinner Money

Surname	Forename	YTI	Reg Group	Enrol Status	School Dinner Taken
Abbott	Jessica	2	2JB	Single Registration	
Abhra	Shaqib	2	2JB	Single Registration	
Abrams	Paul	1	ELM	Single Registration	
Ackton	Charlotte	2	2GH	Single Registration	✓
Aditya	Zayan	R	PINE	Single Registration	✓
Ainsley	Charlotte	1	OAK	Single Registration	✓
Alala	Michael	2	2GH	Single Registration	
Alberts	Courtney	1	PINE	Single Registration	
Andrews	Ching	1	ELM	Single Registration	✓
Andrews	Izabel	R	ASH	Single Registration	✓
Armitage	Elise	R	OAK	Single Registration	✓
Atkins	Austin	R	PINE	Single Registration	✓
Atkins	Portia	1	ASH	Single Registration	
Barnes	Isaac	1	OAK	Single Registration	✓

Total Taken: 91 Total Not Taken: 87

1. Click the **Calculate From Dinner Money** button.

WARNING: Clicking the **Calculate From Dinner Money** button overwrites all existing data in the **School Dinner Taken** panel.

If SIMS detects missing information, the following message is displayed:

Dinner Money information is incomplete. Please ensure that meals are recorded in Dinner Money.

2. Click the **Cancel** button to return to SIMS where the missing information can be entered or the **OK** button to continue.

A tick is entered against each pupil who is receiving any type of meal provided by the school on census day. These meals have a meal type category of **School Provided**, with a description such as hot school meal or school sandwich.

3. Edit the information by clicking the required row, in the **School Dinner Taken** column, to toggle between a tick and blank (no meal taken), as required.

Using Attendance to Calculate School Dinners Taken on Census Day

The School Census Return only requires information about school meals provided by the school on census day. However, if SIMS Attendance is in use, the attendance data recorded for census day morning can be used to calculate all pupils who are present and are likely to be taking a school dinner.

03| Completing the School Census Summer Return

The information calculated from attendance can be edited to so that school meals provided by the school only are collected in the return.

1. Click the **Calculate From Attendance** button.

WARNING: Clicking the **Calculate From Attendance** button overwrites existing data in the **School Dinner Taken** panel.

If missing marks exist, a message is displayed:

Please ensure that registers have been taken. Missing marks have been interpreted as absent and no dinner taken.

2. Click the **Cancel** button to return to SIMS where missing marks can be entered or the **OK** button to continue.

A tick is entered against each pupil who is marked as present on census day morning (i.e. AM session). It is possible that some of these pupils are not taking meals provided by the school, e.g. they go home for dinner or bring a packed lunch from home. Meals provided by the school only are required for the return.

Use the **Group By** functionality to group pupils by **Year Taught In, Reg Group** or **Enrolment Status**, enabling school dinners taken information to be updated from class lists, etc.


3. Edit the information by clicking the required row, in the **School Dinner Taken** column, to toggle between a tick and blank (no meal taken), as required.




Using Manual Entry to Record School Dinners Taken on Census Day

If your school is not using SIMS Dinner Money or SIMS Attendance the number of school dinners taken on census day (i.e. meals provided by the school) can be entered manually.

1. Click the **Tick All** button to populate the **School Dinner Taken** column. All pupils are ticked indicating that they received a school dinner on census day.
2. Edit individual records by clicking the applicable **School Dinner Taken** cell to toggle between a tick and blank (no meal taken).



Z School Dinner Taken

Reference Date: 19/05/2022  All pupils including those eligible for FSM should be included below

 **Group By**  Calculate From Attendance  Calculate From Dinner Money

Surname	Forename	YTI	Reg Group	Enrol Status	School Dinner Taken
Abbott	Jessica	2	2JB	Single Registration	
Abhra	Shaquib	2	2JB	Single Registration	
Abrams	Paul	1	ELM	Single Registration	
Ackton	Charlotte	2	2GH	Single Registration	✓
Aditya	Zayan	R	PINE	Single Registration	✓
Ainsley	Charlotte	1	OAK	Single Registration	✓
Alala	Michael	2	2GH	Single Registration	
Alberts	Courtney	1	PINE	Single Registration	
Andrews	Ching	1	ELM	Single Registration	✓
Andrews	Izabel	R	ASH	Single Registration	✓
Armitage	Elise	R	OAK	Single Registration	✓
Atkins	Austin	R	PINE	Single Registration	✓
Atkins	Portia	1	ASH	Single Registration	
Barnes	Isaac	1	OAK	Single Registration	✓

Total Taken: 91 Total Not Taken: 87

 Tick All  Reset

The **Total Taken** and **Total Not Taken** (located at the bottom of the panel) provide an indication of whether the number of school dinners taken is correct or whether further edits are required.

3. After the return has been created and validated, run the School Dinner Taken detail report and then check the report contents.
4. Continue editing until school dinner taken details are correct.

WARNING: Clicking the **Reset** button removes all existing ticks from the **School Dinner Taken** column.

Entering Attendance Information

Termly attendance data (including attendance codes and the number of sessions missed) should be provided for non-boarder pupil/students and leavers aged four to 15 inclusive on 31/08/2021, who were on-roll for at least one session during the collection period from 01/01/2022 to 17/04/2022.

Initially the **Attendance** panel is blank. However, after clicking the **Calculate All Details** button (located in the **School Information** panel) the display changes.

IMPORTANT NOTE: Clicking the **Calculate All Details** button overwrites any edited data, in every panel, with the original data stored in SIMS. Do not use this button if you wish to keep any changes you have made.

The information displayed in the **Attendance** panel (after the **Calculate All Details** button is clicked) is dependent on which of the following is applicable:

- SIMS Attendance/Lesson Monitor is in use, the attendance codes being used are DfE compliant and there are either:
 - no missing marks
 - or
 - missing marks.
- SIMS Attendance/Lesson Monitor is in use and the attendance codes being used are DfE non-compliant.
- SIMS Attendance/Lesson Monitor is not in use.

SIMS Attendance/Lesson Monitor Users

If SIMS Attendance/Lesson Monitor is in use, data is collected on all categories of school attendance. Ensure that all missing marks and unexplained absences for the previous term have been dealt with before commencing the return.

TIP: After the Create and Validate process is run, the Attendance detail report can be used to assist with the checking of attendance data. Select **Attendance Report** from the **Detail Report** drop-down list.

Are your Attendance Codes DfE Compliant?

If Attendance/Lesson Monitor is in use and your school is using DfE compliant attendance codes, attendance data is entered directly into the return, providing that there are no missing marks.

If all attendance marks have been entered in Attendance/Lesson Monitor, the following message is displayed in the **Attendance** panel, informing you that your attendance codes are DfE compliant but will be rechecked at the Create and Validate stage.

5 Attendance

Your attendance codes are DfE compliant
This will be rechecked at the Create & Validate stage

However, if any missing attendance marks are detected, the following message is displayed in the **Attendance** panel, requesting that you add the missing attendance marks.

5 Attendance

Some attendance marks are missing

Go to Focus | Attendance | Deal with Missing Marks
Please add attendance marks and then click 'Recalculate'

Recalculate

1. Use the Deal with Missing Marks routine (**Focus | Attendance** (or **Lesson Monitor**) | **Deal with Missing Marks**) to locate the missing marks and enter appropriate attendance codes.
2. Return to the **Census Return Details** page and click the **Check missing marks** button in the **Attendance** panel to ensure that all missing marks have been dealt with.

NOTE: The Create and Validate process can still be run even if some attendance marks are missing. You will be asked if you wish to continue to create the return or cancel the Create and Validate process.



More Information:

Producing Detail Reports on page 42

Are your Attendance Codes DfE Non-Compliant?

If Attendance/Lesson Monitor is in use but one or more invalid attendance codes have been detected, a message is displayed in the **Attendance** panel to inform you that your attendance codes are not DfE compliant.

5 Attendance

Your attendance codes are not DfE compliant

Please deal with this lack of compliance and then press 'Check attendance codes'

Check attendance codes

1. Non-compliant codes must be dealt with. Please contact your Local Support Unit for assistance.
2. Click the **Check attendance codes** button to check that DfE attendance codes are now in use.

If the attendance codes are now DfE compliant, a message informs you that the codes will be rechecked at the **Create & Validate** stage.

3. Click the **OK** button to continue.

SIMS Attendance/Lesson Monitor Not in Use

If Attendance/Lesson Monitor is not in use, the following data must be entered manually:

- Termly Possible Sessions (**T Poss Sessions**)
- Termly Sessions Missed due to Authorised Absence (**T Auth Absences**)
- Termly Sessions Missed due to Unauthorised Absence (**T Unauth Absences**)
- Total sessions attending approved educational activity (**T AEA Sessions**)
- Total sessions unable to attend due to exceptional circumstances (**T Excep Sessions**)
- Total number of sessions unable to attend due to Coronavirus (**T Corona Sessions**).

8 Attendance

Attendance Application not in use. Manual entry is required.

Check for additional pupil & zero totals

Group By

Surname	Forename	YTI	Reg Group	Enrol Status	T Poss Sessions	T Auth Absences	T Unauth Absences	T AEA Sessions	T Excep Sessions	T Corona Sessions
Abbott	Jessica	Year 2	2JB	On Roll	0	0	0	0	0	0
Abhra	Abjit	Year 6	6VC	On Roll	0	0	0	0	0	0
Abhra	Alisha	Year 6	6VC	On Roll	0	0	0	0	0	0
Abhra	Shaguib	Year 2	2JB	On Roll	0	0	0	0	0	0
Abrams	Paul	Year 1	ELM	On Roll	0	0	0	0	0	0
Ackton	Charlotte	Year 2	2GH	On Roll	0	0	0	0	0	0
Ackton	Stan	Year 6	6KH	On Roll	0	0	0	0	0	0
Adams	Nancy	Year 4	4ES	On Roll	0	0	0	0	0	0
Adams	Sadie	Year 3	3CB	On Roll	0	0	0	0	0	0
Aditya	Zayan	Year R	PINE	On Roll	0	0	0	0	0	0
Ainsley	Charlotte	Year 1	OAK	On Roll	0	0	0	0	0	0
Akeman	Richard	Year 5	5BB	On Roll	0	0	0	0	0	0
Akeman	Steven	Year 5	5DT	On Roll	0	0	0	0	0	0
Alala	Candis	Year 4	4SL	On Roll	0	0	0	0	0	0

1. To filter the display of pupil/students in the **Attendance** panel, select **Year Group**, **Registration Group** or **Enrolment Status** from the **Group By** drop-down list.
Alternatively, select **Group by None** to display a list of all pupil/students.
2. To sort the displayed data by surname, forename, year group, registration group or enrolment status, click the appropriate column header.
3. For each pupil/student, enter the correct attendance numbers in the appropriate columns.

03| Completing the School Census Summer Return

4. To clear the attendance information and check for additional pupil/students, click the **Check for additional students & zero totals** button.

WARNING: If the **Check for additional students & zero totals** button is clicked, any attendance data entered manually is lost.

04 | Creating and Validating the Summer Return

Creating and Validating the School Census Return.....	39
Producing Detail Reports	42
Printing a Report from your Web Browser	49
Transferring Report Data to a Spreadsheet via Internet Explorer ..	50
Deleting Temporary Web Browser Files	50
Producing the Summary Report	50
Editing an Unauthorised Return	51
Authorising the Return.....	52
Submitting the Return	54
Retrieving Authorised Census Return Files	54
Copying a Return	55
Deleting an Unauthorised Return	56

Creating and Validating the School Census Return

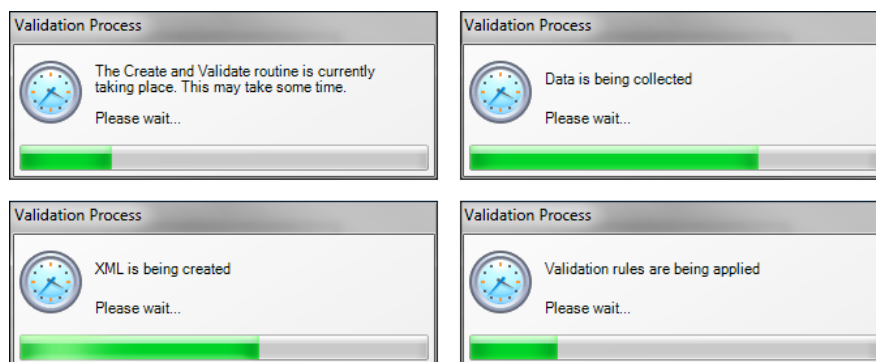
A return must be created, validated and authorised before it can be sent to your Local Authority or uploaded to the DfE COLLECT data collection website (as applicable to your school).

Validating the return creates an unauthorised return file, which is then run against a set of DfE rules. When the validation is complete, a list of errors and queries is displayed.

An error is caused by either missing or inaccurate data, whilst a query highlights data that is unusual or not as expected, e.g. there are no pupil/students showing as having special educational needs.

1. Select **Routines | Statutory Returns | School Census** to display the **Census Return** browser.
2. Click the **Search** button to display a list of returns.
3. Double-click the required return to display the **Census Return Details** page.
4. Click the **Create & Validate** button to start the process. There may be a short delay, depending on the number of pupil/students at your school.

A progress bar is displayed, indicating that the Create and Validate process is being performed.



During the Create and Validate process, SIMS examines the data for any anomalies applicable to your school phase, e.g. no top-up funding information, missing attendance marks, permanent exclusions without a final governor review result, etc.

If an anomaly is found, a message is displayed, which provides the opportunity to continue to create and validate or cancel the process, so that details can be checked. Detail reports are available to assist you when checking details.

When the validation process is complete, the **Validation Errors Summary** panel is displayed at the bottom of the screen.



Additional Resources:

Dealing with Missing Marks section in the *Edit Marks Routine* chapter of the *Managing Pupil/Student Attendance* handbook or the *Monitoring Session and Lesson Attendance* handbook

Recording Exclusion chapter of the *Managing Pupil/Students* handbook

The *DfE Validations and SIMS Solutions Excel* workbook

(https://customer.support-ess.com/csm?id=kb_article_view&sysparm_article=KB0050590).

Resolving Validation Errors and Checking Queries

After creating the return file and validating the data, any errors and queries found are listed in the **Validation Errors Summary** panel.

Validation Errors Summary			
Return Validated: 10 Validation rules failed (Errors: 4, Queries: 6)			
Student Search: [Find] Enter Student Name, DOB (YYYY-MM-DD) or UPN for student filter			
Error Search	ALL	Total of displayed rows: 10	To resolve an error, click in row to navigate to the relevant screen
Type	Sequence	Message	Solution
F	1500	UPN missing	Name: Abraham, Jane Date of Birth: 2005-05-19, Female/UPN: # Go to Focus Student Student Details and add or issue a UPN.
F	1840	Pupils aged 5 and over Language missing or invalid.	Name: Reid, Rosal Date of Birth: 2009-03-07, Female/UPN: # Go to Focus Student Student Details and add or issue a UPN.
F	2350	Insufficient Address information provided.	Name: Henderson, Jack Date of Birth: 2010-05-07, Male/UPN: KB23299140 # Go to Focus Student Student Details Ethnic/Cultural panel and enter First language
Q	1601Q	Please Check: Pupil's age is out of range for school type.	Name: Bains, Kirki Date of Birth: 2005-01-18, Male/UPN: H820200109012 # Go to Focus Student Student Details Addresses and edit pupil's address
Q	1620Q	Please check: duplicate pupil records with the same Surname, Forename, Gender and Date of birth.	Name: Sungail, Skaisiel Date of Birth: 2008-03-28, Female, Age: 12/UPN: B8 # Go to Focus Student Student Details and enter pupil's date of birth.
Q	1620Q	Please check: duplicate pupil records with the same Surname, Forename, Gender and Date of birth.	Name: Bennison, Hugo Date of Birth: 2013-02-03, Male/UPN: # Go to Focus Student Student Details and check for duplicate pupil record.
Q	2350Q	Please check: Pupil record with no address details.	Name: Bennison, Hugo Date of Birth: 2010-02-03, Male/UPN: VB2329991400 # Go to Focus Student Student Details and check for duplicate pupil record.
			Name: Dolinski, Celia Date of Birth: 2013-09-14, Female/UPN: CP2329991400 # Go to Focus Student Student Details Addresses and add pupil's address

The **Validation Errors Summary** panel header displays the number of errors and queries found when the Create and Validate routine was run. A pupil/student and error search facility is also available.

The following information is provided to help with the resolution of validation failures:

- **Type** - the type of validation rule.
 - Failure (**F** displayed in red) indicates an error that must be resolved.
 - Query (**Q** displayed in black) indicates that there are unusual data conditions. These should be considered and corrected, if necessary.
- **Sequence** - the validation error or query number.
- **Message** - the validation error or query message text.
- **Location** - the specific record in SIMS that contains the error or query.
- **Solution** - the SIMS menu route and/or instructions about where/how the error can be corrected or the query checked.

TIP: Using the Solution hyperlinks

When the pointer is hovered over an error or query row, it changes to a hand if a hyperlink is available to the area of SIMS where the problem can be checked.

*A hyperlink is also indicated by a hash symbol (#) preceding the **Solution** text.*

Click the required hyperlink to display the specific area in SIMS where the record(s) can be checked/corrected.

To assist in the viewing of errors and queries:

- When the mouse pointer is hovered over a **Message**, **Location** or **Solution**, hover help displays the entire content of that cell.
- The Student Search functionality can be used to display all errors and queries relating to a particular pupil/student.
 - a. Enter all or part of a UPN, pupil/student's surname or date of birth in the **Student Search** field.
 - b. Select the required record from the **Student Search** drop-down list to populate the **Student Search** field.
 - c. Click the **Find** button to display the applicable validation records.
- Use the **Errors Search** to display the required error or query you want to view. Select **ALL**, **ERRORS**, **QUERIES** or the required number from the drop-down list. The total number of rows that relate to the selected validation is displayed adjacent to the **Error Search** field.
- By default, when **ALL** is selected from the **Errors Search** drop-down list, the errors are displayed at the top of the list.

The order of the items in the list can be changed by clicking the appropriate column heading.

The width of the columns can be changed by dragging the dividing line between the column headings until the required size is achieved.

- View a summary of validation failures by clicking the **Report** button (located above the **Validation Errors Summary** panel, on the left-hand side). The report is displayed in your web browser, from where it can be printed or transferred to another application, if required (please see Transferring Report Data to a Spreadsheet via Internet Explorer on page 50).

The report is saved automatically in the **Census Folder** (specified previously via the census browser). The original report, which was generated when the **Create & Validate** button was clicked is also stored in this folder.

- Your generated report file name: Validation Errors Summary.HTML
- Original report file name:
`<LACode><SchoolNumber>_<SurveyType>_<LACode><LL><Year>
_<SerialNumber>_ValidationErrorsSummary.HTML`

For guidance on navigating to files on your local workstation when you are working in a Hosted environment, please contact your System Manager or Local Support Unit.

Resolve as many errors and check as many queries as possible then revalidate the return details. Continue to resolve failures and revalidate the return as many times as necessary.

NOTE: All errors must be resolved, and all queries must be investigated.

If at any point you want to hide the list of error and queries, click the **Close** button located at the top right-hand side of the **Validation Errors Summary** panel. The list is displayed again when the Create and Validate process is run.

Many of the errors generated can be fixed quickly using bulk update functionality (via **Routines | Pupil (or Student) | Bulk Update**). For more information, please refer to the *Managing Pupil/Students* handbook.



More Information:

Transferring Report Data to a Spreadsheet via Internet Explorer on page 50

Producing Detail Reports

Detail reports can be used to check the data stored in SIMS that has been used to create the return. The reports can be produced as soon as the return has been created and validated.

Each detail report header displays the **Security Message** that was defined in the **Census Return** browser, the **Report Criteria** and the **Total Pupil (or Student)s** who are listed in the report. Also included in the report header is the **School Name**, the **Fileset Number**, the **Filename**, the **Report Created** date, and the **XML Version**.

Where a pupil/student's National Curriculum Year group is different from what their date of birth would suggest, the applicable **YTI** cell is highlighted in yellow.

The reports available for selection may vary depending on your school phase.

On-Roll Basic Details Report

Report Criteria: Pupil/students on-roll on census day.

Where applicable, this report provides the following information about pupils who are on-roll on census day: UPN, ULN, legal surname, legal forename, preferred surname, former surname, date of birth (DOB), gender, year taught in (YTI), date of admission (DOA), enrolment status, language, Youth Support Services Agreement (YSSA), part-time status and boarder status.

*NOTE: Where a pupil/student is in a year group that is different to that expected (based on their date of birth), the applicable **Year Taught In** cell is highlighted in yellow.*

Leavers Basic Details Report

Report Criteria: Pupil/students not on-roll on census day.

- Leavers with attendance (01/01/2022 to 17/04/2022)
- Leavers with exclusions (01/08/2021 to 17/04/2022)
- Leavers with learner support of Vulnerable Group Bursary Awarded or Discretionary Bursary Awarded (01/08/2021 to 19/05/2022)
- Leavers with funding and monitoring (01/08/2021 to 19/05/2022)
- Leavers with alternative provision (21/01/2022 to 19/05/2022).

Where applicable, this report provides the following information about pupil/students not on-roll on census day: UPN, ULN, former UPN, legal surname, legal forename, middle name(s), former surname, date of birth (DOB), gender, date of admission (DOA), date of leaving, language, part-time status, boarder status, attendance, exclusions, and Learner Support.

NOTE: Students are only included in the return as leavers if they have attendance, exclusions, learner support, funding and monitoring or alternative provision data that falls within the collection period.

Exclusions Report

Report Criteria: Pupil/students with exclusions from 01/08/2021 to 17/04/2022:

- On-roll pupil/students and leavers
- Suspensions (excluding lunchtime suspensions) starting from 01/08/2021 to 17/04/2022
- Permanent exclusions from 01/08/2021 to 17/04/2022.

NOTE: Permanent exclusions are collected only if a final review exists.

The following details about pupil/students who match the report criteria are displayed: UPN, legal surname, legal forename, date of birth (DOB), gender, date of admission (DOA), date of leaving (DOL), exclusion category, reason(s) for exclusion, exclusions start date, number of sessions from which the pupil/student was excluded, SEN provision and on-roll status.

NOTE: Suspension is the new name for a Fixed Term Exclusion.

Attendance Report

Report Criteria: Pupil/students with attendance one term ago (01/01/2022 to 17/04/2022). On-roll pupil/students and leavers (not boarders) aged four to 15 at 31/08/2021.

The Attendance report provides basic pupil/student information (i.e. UPN, legal surname, legal forename, date of birth (DOB), gender, date of admission (DOA) and year taught in (YTI)) about the pupil/students who match the report criteria.

The attendance information included in the report is dependent on whether Attendance/Lesson Monitor is in use.

- Attendance/Lesson Monitor in Use:
 - termly sessions possible
 - on-roll status
 - present codes
 - approved education activity codes
 - absence codes (divided into authorised and unauthorised sessions)
 - attendance not required codes.
- Attendance/Lesson Monitor Not in Use:
 - sessions possible
 - authorised absence sessions
 - unauthorised absence sessions
 - sessions approved educational activity (AEA)
 - sessions exceptional
 - sessions Coronavirus
 - On Roll Status.

Absentees Report

Report Criteria: On-roll pupil/students and leavers (but not boarders) who have an absence rate of 10% or above, with attendance one term ago (01/01/2022 to 17/04/2022), who were aged four to 15 at 31/08/2021.

An individual pupil/student's overall absence rate is calculated as follows:

$$\text{Overall absence rate} = \frac{\text{Total overall absence sessions}}{\text{Total sessions possible}} \times 100$$

The report provides the following information about the pupil/students who match the report criteria: UPN, legal surname, legal forename, date of birth (DOB), gender, year taught in (YTI), number of sessions possible, session absence (i.e. the number of authorised plus unauthorised absences), on-roll status and enrolment status.

This report can assist with the tracking of absence (particularly persistent absence) and highlights those absences that might need to be tracked.

SEN Report

Report Criteria: On-roll pupil/student with SEN Provision/Status **E** (Education, Health and Care Plan) or **K** (SEN Support).

This report provides a list of pupil/students who have special educational needs. Displayed are their UPN, legal surname, legal forename, date of birth (DOB), gender, year taught in (YTI), SEN provision, member of SEN unit, member of resourced provision indicator and on-roll status.

Address Details Report

Report Criteria: Pupil/students on-roll on census day.

This report provides a list of pupil/students, their UPN, former UPN, legal surname, legal forename, middle name(s), post code, unique property reference number (UPRN), address details and the administrative area/county.

Definition: Unique Property Reference Number (UPRN) is a unique identifier (reference number) that links together related address records across different software programmes. This enables organisations to collate and share information based on a common reference number.

School Dinner Taken Report

Applicable to schools with pupils in Reception, Year 1 and Year 2

Report Criteria: Pupil/students on-roll on census day, who have taken school dinner on the reference date.

- Pupil/students in Year Taught In R, 1 and 2.
- Pupil/students in Year Taught In X who are aged four to six and who were born between 01/09/2014 and 31/08/2017 inclusive (**Special schools only**).

The report header also displays the total number of pupil/students, the total number of school dinners taken and the total number of school dinners not taken.

This report provides the following information about pupil/students who match the report criteria: UPN, legal surname, legal forename, date of birth (DOB), gender, year taught in (YTI) and school dinner taken (yes/no).

Free School Meal Eligibility Report

Report Criteria: On-roll pupil/students on census day who were eligible for free school meals on or after 21/01/2022 and up to census day.

This report provides information on free school meal eligibility for pupil/students who match the report criteria: UPN, legal surname, legal forename, date of birth (DOB), gender, year taught in (YTI), free school meal eligibility start date, end date and the UK country in which the eligibility applies, and on-roll status.

NOTES: This report includes any free school meals recorded outside of England, e.g. Wales.

Only Free School Meals records where the country recorded is England or <blank> attract the Pupil Premium.

Learner Support Report

Report Criteria: On-roll pupil/students and leavers aged 16 plus at 31/08/2021 who have been awarded Vulnerable Group and/or Discretionary Bursary funding from 01/08/2021 to 19/05/2022.

This report provides information about the applicable pupil/students: UPN, legal surname, legal forename, date of birth (DOB), gender, year taught in (YTI), learner support and on-roll status.

Top-up Funding Report

Report Criteria: On-roll pupil/students who have been awarded Top-up Funding as at census day.

The report provides the following information: UPN, legal surname, legal forename, date of birth (DOB), gender, year taught in (YTI) and SEN provision.

Early Years Report

Applicable to schools with Early Years children only

Report Criteria: Pupils with early years data who are on-roll on census day.

- All two year old pupils who were born between 01/04/2019 and 31/03/2020 (hours at setting and funded hours only)
- All three year old pupils who were born between 01/09/2017 and 31/03/2019
- All four year old pupils who were born between 01/04/2017 and 31/08/2017 (with Year Taught In E1, E2, N1 and N2).

The report displays the following information: UPN, legal surname, legal forename, date of birth (DOB), gender, year taught in (YTI), hours at setting, funded hours, 30 hour code, extended funded hours and disability access fund.

Funding and Monitoring Report

Not applicable to Nursery schools

Report Criteria: On-roll pupil/students and leavers with funding and monitoring information for the collection period 01/08/2021 to 19/05/2022.

The report provides the following pupil/student details, and funding and monitoring information: UPN, legal surname, legal forename, date of birth (DOB), gender, Year Taught In (YTI), enrolment status, date of leaving (DOL), funding and monitoring (FAM) type, e.g. NLM (National Learning and Monitoring), funding and monitoring (FAM) code, description, cumulative hours (all hours of tutoring from 01/08/2021 to 19/05/2022) and on-roll status.

Funding and Monitoring key to codes:

01 = Pupil/student in receipt of school-led tutoring programme

21 = Pupil/student in receipt of 16 to 19 tuition fund

22 = Pupil/student is repeating up to one full final year of 16 to 19 funded provision.

The code(s) displayed in the report vary depending on your school phase.



Additional Resources:

Preparing for the School Census Summer 2022 Return guide

Post Looked After Arrangements Report

Report Criteria: On-roll pupil/students who have post looked after arrangements as at census day.

The report provides the following information about pupil/students who have post looked after arrangements: UPN, legal surname, legal forename, date of birth (DOB), gender, year taught in (YTI) and post looked after arrangements, e.g. ceased to be looked after through adoption.

Alternative Provision Report

Report Criteria: School Arranged Alternative Provision Placements that fall within the Alternative Provision Placement data collection period 21/01/2022 to 19/05/2022 (On-roll and leavers).

The report provides the following information: UPN, legal surname, legal forename, date of birth (DOB), gender, Year Taught In (YTI), Alternative Provision URN, Alternative Provision UKPRN, alternative provision setting, alternative provision reason, start date, SEN on start date, end date, SEN on end date, alternative provision attendance, alternative provision sessions and on-roll status.

Permanent Exclusions without Final Review Report

Report Criteria: On-roll pupil/students and leavers with permanent exclusions and without a final review from 01/01/2021 to 17/04/2022.

NOTE: The date range for this report does not match the collection dates for the school census. This is intentional to enable all instances of permanent exclusions without final review to be checked.

This report details permanent exclusions that do not have a final review and will not be included in the census, either because the exclusion process is still ongoing or because the school has not recorded the final review result. The report has been provided to assist schools in checking whether details have been recorded accurately.

The following information is included in the report: UPN, legal surname, legal forename, date of birth (DOB), gender, date of admission (DOA), date of leaving (DOL), reason for exclusion, exclusion start date, SEN expert requested (Yes/No) and on-roll status.

Generating Detail Reports

To select a single detail report, select the required report from the **Detail Report** drop-down list located at the top of the **Census Return Details** page. The selected report is generated automatically and displayed in your web browser.

Census Return Details - Summer 2022 Term : School Census Summer 2022

Save Undo Create & Validate Summary Authorise DetailReport

1 Census Details 2 School Information 3 Top-up Funding 4 Post Looked After Arrangements

1 Census Details

Census Date: 19/05/2022

Description: School Census Summer 2022

Attendance collected from: 01/01/2022

Exclusions collected from: 01/08/2021

FSM collected from: 21/01/2022

AP Placements collected from: 21/01/2022

Learner Support collected from: 01/08/2021

2 School Information

School Name: Green Abbey School

LA: 823 Establishment Number: 01234

Telephone: 851234 URN: 01234

School E-mail Address: office@ga.org.uk

On Roll Basic Details Report
Leavers Basic Details Report
Exclusions Report
Attendance Report
Absentees Report
SEN Report
Address Details Report
School Dinner Taken Report
Free School Meal Eligibility Report
Learner Support Report
Top-up Funding Report
Funding and Monitoring Report
Early Years Report
Post Looked After Arrangements Report
Alternative Provision Report
Permanent Exclusions without Final Review Report
Multiple Reports...

To select several detail reports, select **Multiple Reports** from the **Detail Report** drop-down list to display the **Detail Reports** dialog.

Detail Reports

☒ On Roll Basic Details Report

☒ Leavers Basic Details Report

☒ Exclusions Report

☒ Attendance Report

☒ Absentees Report

☒ SEN Report

☒ Address Details Report

☒ School Dinner Taken Report

☒ Free School Meal Eligibility Report

☒ Learner Support Report

☒ Top-up Funding Report

☒ Early Years Report

☒ Funding and Monitoring Report

☒ Post Looked After Arrangements Report

☒ Alternative Provision Report

☒ Permanent Exclusions without Final Review Report

Report Cancel

By default, all detail reports are selected. If any reports are not required, deselect the associated check box. Click the **Report** button to generate the selected report(s).

The report(s) are displayed in your web browser, from where the data can be transferred to a spreadsheet, if required.

The report(s) are saved automatically in the folder specified in the **Census Return** browser, e.g. S:\SCHOOL CENSUS. For guidance on navigating to files on your local workstation when you are working in a Hosted environment, please contact your System Manager or Local Support Unit.

The report is saved with a filename that consists of the following data fields separated by underscores ('_'):

```
<LACode><SchoolNumber>_<SurveyType>_<LACode><LL><Year>_<SerialNumber>_<name of the report>_detail_report.html
```

For example:

8866676_SC2_886LL22_001_onroll_basic_details_report.html.

The following graphic shows an example of an On Roll Basic Details report.

School Census Summer - 2022 (On Roll Basic Data)													
Security Message : This report contains sensitive information.													
Report Criteria: Pupils on roll on Census day (19/05/2022)													
Total Pupils: 443													
School Name: WATERS EDGE PRIMARY SCHOOL Fileset Number: 2100 (SIMS.net)													
Filename: 8232999_SC2_823LL22_001.UNA Report Created: 14/01/2022													
XML Version: Validation 2022.1.0 - Updated: 2021-09-23 ErrorList 2022.1.0 - Updated: 2021-09-23 Summary 2022.1.0 - Updated: 2021-09-23													
UPN	Legal Surname	Legal Forename	Preferred Surname	Former Surname	DOB	Gender	YTI	DOA	Enrolment Status	Language	Class Type	Part-time Status	Boarder
M823299920001	Abbas	Latif	Abbas	-	11/11/2018	Male	R	03/09/2020	Single Registration	Punjabi	Other	No	Not a Boarder
F823299918013	Abbott	Jessica	Abbott	-	17/02/2014	Female	3	01/09/2018	Single Registration	English	Other	No	Not a Boarder
W823299918001	Abhra	Shaqib	Abhra	-	07/07/2013	Male	3	01/09/2017	Single Registration	Bengali	Other	No	Not a Boarder
F823299918001	Abrams	Paul	Abrams	-	15/12/2014	Male	2	01/09/2018	Single Registration	English	Other	No	Not a Boarder
D823299917001	Ackton	Charlotte	Ackton	-	10/02/2014	Female	3	01/09/2017	Single Registration	English	Other	No	Not a Boarder
2823299921021	Ackton	Simon	Ackton	-	12/12/2019	Male	R	05/09/2021	Single Registration	English	Other	No	Not a Boarder
G823299915001	Adams	Nancy	Adams	-	18/12/2011	Female	5	01/09/2015	Single Registration	English	Other	No	Not a Boarder

Where a pupil/student's National Curriculum Year group is different from what their date of birth would suggest, the applicable **YTI** cell is highlighted in yellow.



More Information:

Configuring the Census Folder on page 13

Transferring Report Data to a Spreadsheet via Internet Explorer on page 50

Printing a Report from your Web Browser

IMPORTANT NOTE: Any printed reports containing information that could identify a person (e.g. their name, address, UPN, etc.) should be used for validation purposes only and should not be retained. The Security Message (displayed at the top of each report) can be customised to include, for example, instructions for the destruction of the printed reports.

1. With the generated report displayed in your web browser, select the **Print** option (**Ctrl+P**) to display the **Print** dialog.
2. Ensure that the print settings are correct then click the **Print** button.
3. Click the **Close** button on the top right-hand corner of the web page to close the report and return to the census page.

Transferring Report Data to a Spreadsheet via Internet Explorer

Transferring a report to a spreadsheet application enables the data to be sorted, the column order to be changed, etc.

With the generated report displayed in your web browser, right-click the report and then select **Export to Microsoft Excel** from the drop-down list.

IMPORTANT NOTE: The spreadsheet contains the same level of sensitive information as the original HTML report from which the information was transferred. Therefore, the spreadsheet file must be saved to a folder with the same level of security.

Deleting Temporary Web Browser Files

It is recommended that, after viewing statutory returns reports, you delete any temporary web browser files to ensure that any cached data (i.e. data stored on your machine, which enables high-speed access to previously viewed data) is removed.

This prevents the information, e.g. copies of web pages that are stored in the local cache for faster viewing, remaining on the hard disk of the device in the temporary directory, where it is not secure.

When this process is performed, all temporary files (including any Statutory Returns reports files) that the browser has cached are deleted.

To clear the cache, open your web browser, then clear the browsing data history. For more information, please refer to the documentation applicable to the web browser you are using.

Producing the Summary Report

The Summary report enables the school staff, who are involved in the return's preparation, to assess the accuracy and completeness of the return data. It should then be passed to the Head Teacher for their review.

NOTE: When the return is authorised, the Summary report is automatically generated and displayed in your web browser.

Generating the Summary Report

When the return is authorised, the Summary report is automatically generated and displayed in your web browser. However, the report can be run at any time after the return is created and validated.

Click the **Summary** button located at the top of the **Census Return Details** page. The report is automatically displayed in your web browser but can be transferred to a spreadsheet, if required.

The report is saved automatically in the folder specified in the **Census Return** browser, e.g. S:\SCHOOL CENSUS. For guidance on navigating to files on your local workstation when you are working in a Hosted environment, please contact your System Manager or Local Support Unit.

The report is saved with a filename that consists of the following data fields separated by underscores ('_'):

```
<LACode><SchoolNumber>_<SurveyType>_<LACode><LL><Year>_<SerialNumber>_<name of the report>_Summary_Report.html
```

For example: 8866676_SC2_886LL22_001_Summary_Report.html.

It is important that the Head Teacher checks all the information on the Summary report before the return is authorised. Your LA/DfE might request a copy of the Summary report (which is automatically generated when the return is authorised) to be signed by the Head Teacher and sent to the LA/DfE when the return has been authorised.



More Information:

Configuring the Census Folder on page 13

Producing Detail Reports on page 42

Transferring Report Data to a Spreadsheet via Internet Explorer on page 50

Authorising the Return on page 52

Deleting an Unauthorised Return on page 56

Editing an Unauthorised Return

The return details, e.g. **Description**, **School Information**, etc. can be edited via the **Census Return Details** page at any time prior to authorisation.

IMPORTANT NOTE: An authorised return cannot be edited. If changes are required to an authorised return, use the **Copy** facility to produce a duplicate return (with a unique description) in which the changes can be made.

1. Select **Routines | Statutory Returns | School Census** to display the browser.
2. Ensure that the **Census Folder** and the **Security message for Reports** are correct, then click the **Search** button to display any previously created returns. Unauthorised return files can be recognised by their .UNA suffix.
3. Double-click the required return. Alternatively, highlight the required return, then click the **Open** button to display the **Census Return Details** page.
4. Edit the return details as required.
5. Click the **Create & Validate** button to display the **Validation Errors Summary** panel.
6. Run the detail reports and Summary report and then use the information they provide to assist with resolving errors and queries.
7. Repeat the editing and Create & Validate process again, if necessary.
8. Click the **Save** button.



More Information:

Configuring the Census Folder on page 13

Specifying the Security Message for Reports on page 14

Resolving Validation Errors and Checking Queries on page 40

Producing Detail Reports on page 42

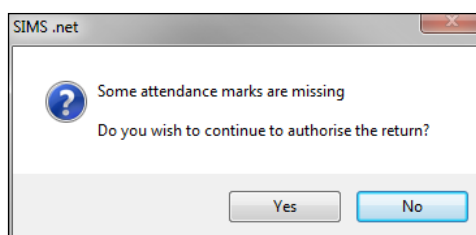
Producing the Summary Report on page 50

Authorising the Return

A return must be authorised before it can be submitted to your Local Authority or uploaded to the DfE COLLECT data collection website (as applicable to your school). If you authorise a return and subsequently need to make amendments, you must either make a copy of the return and work on the copy or create a new return.

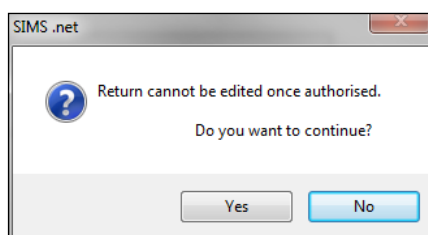
Before authorising the return, you should ensure that all the information displayed on the **Census Return Details** page is correct and does not require further editing. This is because it is not possible to edit details after the return is authorised. The content of the Summary report can be useful when reviewing the information.

1. Click the **Authorise** button. If missing marks exist, the following message is displayed.



2. Click the **Yes** button to continue with the authorisation process or the **No** button if you want to return to SIMS where the missing marks can be entered.

If you choose to continue, a message reminds you that the return cannot be edited once it is authorised.



3. Click the **Yes** button to continue or the **No** button to return to SIMS where edits can be made to the data before authorising.

If you choose to continue, the **Head teacher authorisation** dialog is displayed.

4. Enter any additional text to be displayed on the authorisation report, if required. This may be requested by your LA, e.g. to explain the reason for any validation failures.
5. Select the confirmation check box to confirm that the Head Teacher is satisfied that the Summary and/or detail reports have been checked and that the return file is ready for upload to your LA/DfE.
When the confirmation check box is selected, the **Continue** button is activated enabling you to complete the authorisation process.
6. Click the **Continue** button to authorise the return and prompt the following actions:
 - The return file extension changes automatically from UNA (unauthorised) to XML (authorised).
 - The Summary report, Authorisation report and Validation Errors Summary report are generated automatically and displayed in your web browser, from where they can be printed, if required.

All reports (including detail reports) and the XML file are saved in the **Census Folder**, which was specified previously in the **Census Return for Summer 2022 Term** browser.

These reports can be viewed using the Retrieve Authorised Census Return Files routine (via **Tools | Statutory Return Tools**). This routine also provides the opportunity to download the files to a different folder.

IMPORTANT NOTE: *The retrieved files contain sensitive information. Ensure that authorised personnel only have access to the download folder.*

For guidance on navigating to files on your local workstation when you are working in a Hosted environment, please contact your System Manager or Local Support Unit.

After the return is authorised, reports based on cohorts can be created (via **Reports | Design Reports**), so that items collected in the return can be tracked. Provided that **Student** has been selected as the data area, the Statutory Returns sub-report is available for selection when specifying the fields to be included in the report (the last node).



Additional Resources:

Designing and Running Reports handbook



More Information:

Producing the Summary Report on page 50

Retrieving Authorised Census Return Files on page 54

Copying a Return on page 55

Submitting the Return

When the return has been completed and the Summary report has been signed by the Head Teacher (if requested to do so by your LA), the .XML file can be uploaded to the DfE COLLECT data collection website or sent to your LA, depending on the instructions you have been given.

Guidance about how Local Authorities, schools and academies should submit the census data is available on the GOV.UK website (<https://www.gov.uk/guidance/school-census>).

The authorised return file can be located in the folder previously specified in the **Census Return** browser. For guidance on navigating to files on your local workstation when you are working in a Hosted environment, please contact your System Manager or Local Support Unit.

IMPORTANT NOTE: An authorised file cannot be edited. If you need to make changes to an authorised file, you must make a copy of the original file, rename it and work on the copy.



More Information:

Configuring the Census Folder on page 13

Copying a Return on page 55

Retrieving Authorised Census Return Files

Authorised returns are stored in your Document Management Server (DMS). The Returns Manager can download and run the reports associated with previous authorised returns enabling the data for the current return to be compared with that submitted previously.

1. Select **Tools | Statutory Returns Tools | Retrieve Authorised Census Return Files** to display the **Retrieve Authorised Census Return Files for <census name>** page.
2. Select the type of census required from the **Return Type** drop-down list to display a list of previous returns that match the selected criteria.

3. By default, the **Download to** field displays the folder specified previously in the **Census Return** browser. To specify a different folder:
 - a. Click the **Select a folder** button (...) to display the **Browse For Folder** dialog. Navigate to the location of the required folder then highlight it. If a suitable folder does not exist, click the **Make New Folder** button then enter a suitable folder name.

IMPORTANT NOTE: *Ensure that authorised personnel only have access to the download folder because the retrieved files contain sensitive information.*

For guidance on navigating to files on your local workstation when you are working in a Hosted environment, please contact your System Manager or Local Support Unit.

- b. Click the **OK** button to select or create the folder and then return to the **Retrieve Authorised Return Files for <census name>** page, where the chosen folder name is displayed in the **Download to** field.
4. Highlight the return you wish to retrieve then click the **Retrieve Files** button.

The authorised return file (i.e. the XML file) and all reports associated with the selected return are downloaded from your DMS to the specified folder. The folder and its contents are then displayed automatically, enabling you to open the required files in your web browser.

5. The contents of the specified folder can be viewed again by clicking the **Folder** button adjacent to the **Download to** field.

If you want to create reports based on cohorts, so that items collected in the return can be tracked, a sub-report is available (via **Reports | Design Reports**).

The **Statutory Returns** sub-report is available for selection only if **Student** has been selected as the Data Area.

When you **Select fields to be included in the report**, the **Statutory Returns** sub-report is located at the bottom of the list (the last node). Three options are available for selection under this sub-report: **Authorised Date**, **File Name** and **Return Description**.



Additional Resources:

Designing and Running Reports handbook

Copying a Return

An unauthorised return can be copied and saved as a new return. This enables a 'snapshot' of a return to be taken at any time providing a backup of any manual changes that have been made to the return, for example before recalculating details.

This functionality can also be used to make a copy of an authorised return if the LA or DfE requires it to be resubmitted. The necessary corrections can then be made to the data. The copied return must be saved, created, validated and authorised before resubmitting.

NOTE: Ensure that the return you wish to replicate is not open at the time of copying.

1. Select **Routines | Statutory Returns | School Census** to display the census browser.
2. Click the **Search** button to ensure that the list of returns is displayed.
3. Highlight the file you want to copy then click the **Copy** button.

A message prompts for confirmation that you wish to make a copy of the selected return.

IMPORTANT NOTE: Any values for Early Years, Top-up Funding, Post Looked After Arrangements, Funding and Monitoring, and Attendance (where applicable), will not be copied but will be populated from the current values held in the database.

The Create & Validate routine must be run to generate a new census file.

4. Click the **Yes** button to make the copy, which is then displayed in the browser as:
Copy of <description of selected file>.
5. To rename the copied return, highlight it, then click the **Open** button to display the **Census Return Details** page.
6. In the **Census Details** panel, edit the **Description** then click the **Save** button.

IMPORTANT NOTE: A unique description must be used for each return. If duplicate returns are detected, an error message is displayed.

Deleting an Unauthorised Return

During the return process, several copies of the return might be created, e.g. to track progress. When the return has been authorised successfully, it is advisable to delete any versions of the return that are no longer required. This keeps the number of files in the storage folder and listed in the browser to a minimum, therefore removing confusion and lessening the risk of selecting the incorrect return.

The Delete routine can be used to remove unwanted returns at any time prior to the relevant return being authorised.

IMPORTANT NOTES: When a return file is deleted, any associated files, e.g. Validation Errors Summary, detail reports, etc. that have been produced are also deleted.

Any return files that have already been authorised cannot be deleted.

1. Select **Routines | Statutory Returns | School census** to display the browser.
2. Click the **Search** button to ensure that the list of return files is displayed.

3. Highlight the return file to be deleted, then click the **Delete** button. A message prompts for confirmation that the selected return should be deleted.
4. Click the **Yes** button to permanently delete the selected return file and all associated report files.

The selected return file and associated reports are removed from the browser and the storage folder.

Index

3

30 hour code 17

A

absentees report 44

academies 17

access rights 7

address details report 45

alternative provision placements 47

attendance information

 checking/editing 35

 compliant codes 36

 non-compliant codes 36

 school dinner taken on census day .31, 33

 SIMS Attendance not in use 34

authorising 52

 retrieving previous authorised census
 returns 54

 school census 52

C

calculating all details 15

census details

 checking dates 14

 editing description 14

configuring

 school census defaults 13

copying

 school census return 55

creating & validating 39

D

data collected

 school level 8

 pupil/student level 9

default folder

 defining 14

deleting

 school census return 56

 temporary web browser files 50

detail reports

 producing 42

 transferring to a spreadsheet 50

DfE compliant codes 36

DfE non-compliant codes 36

dinner money

 school dinner taken on census day .31, 32

disability access fund 17

E

early years data

 30 hour code 17

 disability access fund 17

 extended funded hours 17

 funded hours 17

 hours at setting 17

 report 46

 updating 17

editing

 an unauthorised return 51

 attendance information 35

 early years 17

 editing - funding and monitoring 27

 post looked after arrangements 24

 school information 15

entering

 attendance information 35

errors and queries (validation)

 resolving 40

exclusions report 43

extended funded hours 17

F

free school meals

 eligibility report 45

funded hours

 no hours recorded 22

 updating 17

funding and monitoring 46

H

hours at setting	
no hours recorded	22
updating	17

L

learner support report.....	46
-----------------------------	----

P

permissions	7
post looked after arrangements	
editing	24
report	47
preparation	
checking data	8
minimum version of SIMS.....	8
permissions	7
previous authorised census returns	54
printing	
reports.....	49, 54
validation errors summary	40
pupil/student reconciliation	
universal infant school meal.....	31

Q

queries and errors (validation)	
resolving	40

R

reporting	
deleting temporary web browser files ..	50
designing reports	54
producing detail reports.....	42
absentees report	44
address details report.....	45
alternative provision report	47
exclusions report	43
free school meal eligibility report.....	45
generating detail reports.....	48
learners support report.....	46
leavers basic details report.....	43
on-roll basic details report.....	43

post looked after arrangements	
report.....	47
reporting - funding and monitoring	
report.....	46
school dinner taken report.....	45
SEN report.....	45
top-up funding report	46
specifying security message	14
resolving	
errors and queries	40
retrieving	
authorised census return files	54
return	
permissions	7

S

school census return	
authorising	52
configuring the storage folder.....	13
copying	55
deleting.....	56
new	11
submitting	54
school dinner taken on census day	31
school dinner taken report	45
school information	
checking.....	8, 15
security	
deleting temporary files	50
specifying security message	14
SEN report	45
SIMS	
version required to create return.....	8
steps to producing the return	
flowchart	4
submitting the return	54
summary report	
printing	49
producing	50

T

temporary web browser files	
-----------------------------	--

deleting	50
top up funding	
top-up funding report.....	46
updating	22, 46
transferring	
report data to a spreadsheet	50
submitting the return	54

U

unauthorised return	
copying	55
deleting	56
editing	51
updating	
early years data	17
post looked after arrangements	24
top-up funding	22
uploading the return	54

V

validation failures	
resolving	40

Y

youth support services agreement	43
--	----